

Diary Dates
coming up

4th December –
Community Café
1.30-3.00
Wk beg 9th Dec EYFS
and year 1
nativity & Nursery
nativity
17th December Year
2/3/4 Christingle
with parents
17th December KS1
Christmas Lunch
18th December KS2
Christmas lunch
18th December –
Elves Grotto –
children can buy a
gift for a family
member.



Our children look amazing as they join us in their group uniform on Remembrance Day. All our children showed great respect and service.

Christmas at The Bishops

Christmas time in schools is a very special time. We know how important it is to parents.

As we mentioned last Christmas, year 2 will no longer have their own nativity. They have a nativity in nursery, reception and year 1. We want them to have the chance to do something different. From now on Year 2 will join the Christingle where they will have an important role to play.

Below you will see the events taking place over the Christmas period. Some will be just for the children where space is tight. Where we are able to invite parents we are delighted to do so. However, as our school has so many children we do need to limit it to two people per child in order to ensure there is space and it is safe.

4th December- Community Café 1.30 to 3.00pm

Monday 9th December - nursery - 10:45am in nursery – Parents welcome

Tuesday 10th December - Y1 dress rehearsal to whole school 9:30am – no parents

Wednesday 11th December - Y1 performance to parents 9:30 and 2.00pm

Thursday 12th December - YR dress rehearsal to whole school 9:30am – no parents

Thursday 12th December - 2pm – year R Performance to parents 2pm

Friday 13th December - YR performance to parents 9:30am

17th December 2.00pm year 2/3/4 Christingle with parents

17th December KS1 Christmas lunch - KS2 eat in class - KS1 wear Christmas jumper

18th December KS2 Christmas lunch - KS1 eat in class - KS2 wear Christmas jumper

18th throughout the day - Elf workshop – children buy gift for family members.

In the news this
week..

Christmas

Poppies

Sporting success

Remembrance

Sunday



Children lay a wreath at the Thetford memorial on Remembrance Sunday.

SPORTING SUCCESS

On the 6th of November a group of children joined Mrs. Porter for a morning of fun.

What a fab morning had by all!! They entered a Panathlon challenge at Icen Academy.

The morning was filled with happy faces and the opportunity to try new sports. Our teams were placed 4th and 2nd. GO TEAM BISHOPS!

On the 14th of November Bishops attended another fantastic sporting. This time it was the swimming gala. 6 primary schools entered with over 100 children competing.

Nerves were high as swimming is one of the toughest sports! But yet again our Bishops children sparkled.

We placed 3rd overall with a score of 218.

A special mention to Max who won 2 of his races and 2nd in his other race

EARRINGS

Previously we have reminded our families of the need to remove earrings when undertaking any sporting activity. We have also reinforced the need to only wear a simple stud earring when coming to school. This is consistent across all schools in the county and is to keep children safe. Some parents have been concerned about removing children's earrings as they worry about their ears healing.

We have listened to you and have spoken to other schools and safety experts and have identified a solution. You can buy a flexible silicon earring to wear on days when your child is doing sports. This will move and bend if caught and so will not damage to delicate ears. This could be worn for the six week period a child cannot remove their earring.

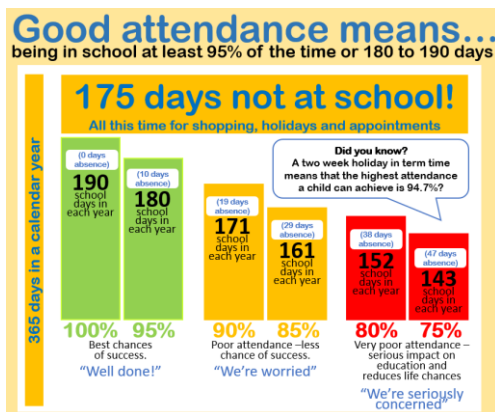


This is a temporary measure. You will need to ensure your child wears these silicon earrings on PE days or days your child is taking part in a sporting event.

After six weeks your child should be able to remove their earring for the days they have PE.

You can buy a hundred for £2.00 from online shops like Amazon.

Attendance



Attendance over 96% has been shown to have a significantly positive impact on a child's education and how they perform in their GCSEs and A Levels. If a child has attendance below 94% every year, they are much less likely to perform well at school. Also if your child is receiving support in class or interventions like speech and language, or play therapy, they will not receive these sessions.

KEEP US UP TO DATE WITH YOUR CONTACT DETAILS

Please ensure the school office has your most up to date contact details to ensure we can contact you in an emergency and so you do not miss updates.

For questions and queries, please contact:

Tel No: 01842 754 902

E-mail: office@bishop.norfolk.sch.uk

Sporting Success



We are so proud of you all. You look amazing in your medals.

We had an interloper in a number of sporting events recently. It appears our attendance lamb has been joining the children swimming and in PE!



Our attendance winners this week are

In first place Pine Class again with 97.59%

Second place; Rowan class with 96.73

Third place; Hazel Class with 96.64

We will be introducing two new end of term awards this term.

The 12 children with the most improved attendance will have hot chocolate with the head. The three most improved classes will have a special award.

