

2023 KS1 Extended School Dashboard

for headteachers, senior leaders & teachers

Produce custom dashboards
at fftaspire.org

The Bishop's Church of England Primary Academy

LA Norfolk DFE 9262118 Produced September 2023

What it is

The FFT Extended School Dashboard provides headteachers, senior leaders and teachers with a more detailed analysis of school performance.

The dashboard consists of four individual sections – Summary, Reading, Maths, Writing – and includes additional reports not found in the standard FFT School Dashboard.

What it tells you

What are the strengths, areas for improvement and under-performing groups of pupils

How does attainment and pupil progress compare to the national average this academic year?

How are you performing in different subjects?

How might the context of your school affect performance?

Important for 2023

2023 data has been calculated using the teacher assessment data uploaded by schools who participated in the 2023 FFT Assessment Service. **The data is for internal use only and is NOT intended to be used for external accountability.**

About the data shown

1 2 3

Actual results

Actual results for your school, using a range of measures such as averages and thresholds.



Gauges

These display headline indicators and whether actual results and pupils' progress are in line with, or significantly above or below, the national average.

ESTIMATED

1 2 3

Pupil progress

The value added progress that your pupils have made from one key stage to the next. FFT compares your actual results to the estimated results based on the progress of similar pupils nationally.



Statistical significance

Green plus signs and red minus signs highlight where either actual results or pupils' progress is significantly above or below the national average.



Trends

The dashboard analyses school performance over 3-5 years. Any significant year-on-year improvement is highlighted using an up arrow. Significant declines in performance are highlighted with a down arrow.



Strengths & weaknesses

These highlight key pupil groups and subjects where progress is above or below the national average.

Working in partnership with



Data sources

Generated from FFT Aspire which includes data sourced from schools using the 2023 FFT Results Service and data calculated by FFT.

Summary analysis

Reports included in this section

Overview

Attainment & progress

Pupil groups

Subjects

Disadvantaged pupils

Scatterplot

Confidential: Contains personal information

Context



Key indicators

% Expected Standard + (Re, Wr, Ma)

% Higher Standard (Re, Wr, Ma)

% Expected Standard + Reading

% Expected Standard + Writing

% Expected Standard + Maths

% Expected Standard + Science

Reading standard

VA

Value added

Achievement is compared with similar pupils nationally. The FFT VA model uses prior attainment, gender and month of birth as a starting point.

2023 Value Added has only been calculated for pupils who we received EYFSP data as part of the 2021 FFT Results Service

The Bishop's Church of England Primary Academy

2023 KS1 VA

Overview

KS1 Attainment 2023 · Actual results

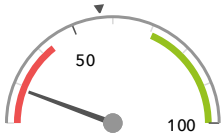
52 pupils

% Expected Standard + (Re, Wr, Ma)

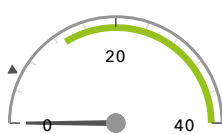
% Higher Standard (Re, Wr, Ma)

29% -

0%



Significantly below the national average (57%) ◀



In line with the national average (6%) ◀

KS1 Progress 2023 · Value Added

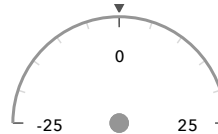
matched pupils

% Expected Standard + (Re, Wr, Ma)

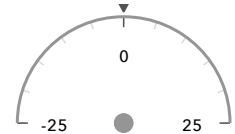
% Higher Standard (Re, Wr, Ma)

-

-



In line with the national average (0%) ◀



In line with the national average (0%) ◀

KS1 higher and lower performing pupil groups 2023

Minimum group size: 5

| | Higher performing | Lower performing |
|------------------------------------------------------|-------------------|------------------|
| Overall achievement pupil progress | | |
| KS1 reading achievement pupil progress | | |
| KS1 writing achievement pupil progress | | |
| KS1 mathematics achievement pupil progress | | |

Census information

KS1's latest academic year uses the context data provided in the school's MIS

2023 Value Added has only been calculated for pupils who we received EYFSP data as part of the 2021 FFT Results Service

The Bishop's Church of England Primary Academy

2023 KS1 VA

Attainment & progress

KS1 Attainment 2023

52 pupils

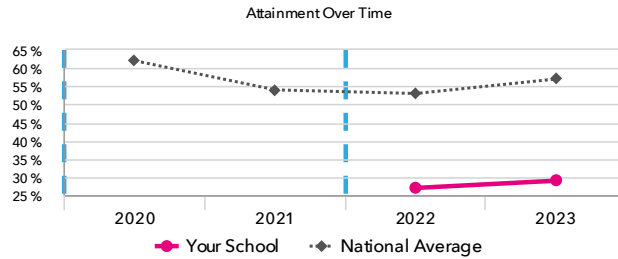
% Expected Standard + (Re, Wr, Ma)

29% -

FFT Rank



Significantly below the national average (57%)



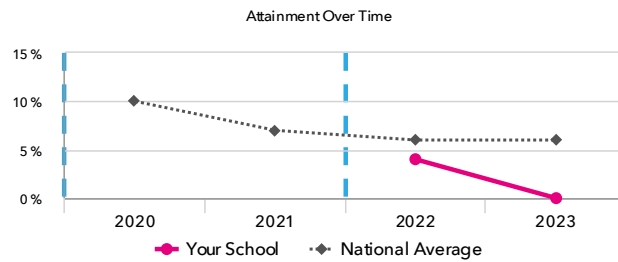
% Higher Standard (Re, Wr, Ma)

0%

FFT Rank



In line with the national average (6%)



KS1 Progress 2023

% Expected Standard + (Re, Wr, Ma)

0%

FFT Rank



In line with the national average (0%)

% Higher Standard (Re, Wr, Ma)

0%

FFT Rank



In line with the national average (0%)

KS1 performance summary

| | Actual results | | | Pupil progress | | |
|------------------------------------|----------------|----------------------------------------|----------------------------------------|----------------|------|------|
| | 2021 | 2022 | 2023 | 2021 | 2022 | 2023 |
| Number of Pupils / % Matched | - | 48 | 52 | - | - | - |
| % Expected Standard + (Re, Wr, Ma) | - | 27% - | 29% - | - | - | - |
| % Higher Standard (Re, Wr, Ma) | - | 4% | 0% | - | - | - |
| % Expected Standard + Reading | - | 52% - | 38% - | - | - | - |
| % Higher Standard Reading | - | 8% | 2% - | - | - | - |
| % Expected Standard + Writing | - | 31% - | 37% - | - | - | - |
| % Higher Standard Writing | - | 6% | 0% - | - | - | - |
| % Expected Standard + Maths | - | 44% - | 54% - | - | - | - |
| % Higher Standard Maths | - | 8% | 10% | - | - | - |

Census information

KS1's latest academic year uses the context data provided in the school's MIS

2023 Value Added has only been calculated for pupils who we received EYFSP data as part of the 2021 FFT Results Service

The Bishop's Church of England Primary Academy

2023

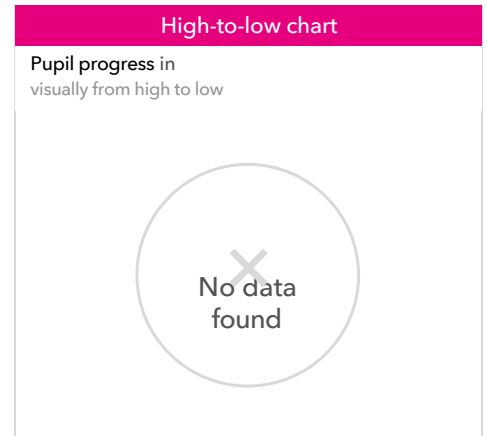
KS1

VA

Pupil groups

KS1 Pupil groups performance 2023

| | Pupils | Actual results | | Pupil progress | | |
|----------------------|----------------------------|------------------------------------|----------------------------------------|------------------------------------|--------------------------------|---|
| | | % Expected Standard + (Re, Wr, Ma) | % Higher Standard (Re, Wr, Ma) | % Expected Standard + (Re, Wr, Ma) | % Higher Standard (Re, Wr, Ma) | |
| Summary | All Pupils | 52 | 29% - | 0% | - | - |
| Gender | Male | 24 | 38% | 0% | - | - |
| | Female | 28 | 21% - | 0% | - | - |
| Pupil Premium | FSM (in last 6 years) | 32 | 28% | 0% | - | - |
| | Not FSM (in last 6 years) | 20 | 30% - | 0% | - | - |
| FSM | FSM | 32 | 28% | 0% | - | - |
| | Not FSM | 20 | 30% - | 0% | - | - |
| Term of Birth | Summer Term | 21 | 38% | 0% | - | - |
| | Spring Term | 19 | 21% - | 0% | - | - |
| | Autumn Term | 12 | 25% - | 0% | - | - |
| SEN Group | SEN Support | 18 | 22% | 0% | - | - |
| | No SEN | 34 | 32% - | 0% | - | - |
| EAL | First language not English | 12 | 25% | 0% | - | - |
| | First language English | 40 | 30% - | 0% | - | - |
| Ethnicity | White | 46 | 33% - | 0% | - | - |
| | Black Caribbean | 1 | 0% | 0% | - | - |
| | Black African | 2 | 0% | 0% | - | - |
| | Unknown | 3 | 0% | 0% | - | - |



Census information

KS1's latest academic year uses the context data provided in the school's MIS

2023 Value Added has only been calculated for pupils who we received EYFSP data as part of the 2021 FFT Results Service

The Bishop's Church of England Primary Academy

2023 KS1 VA

Subjects

KS1 subject performance 2023

| | Actual results | | | Pupil progress | | | Actual results over time |
|------------------------------|----------------|---------------------------------------|---------------------------------------|----------------|------|------|--------------------------|
| | 2021 | 2022 | 2023 | 2021 | 2022 | 2023 | |
| Number of Pupils / % Matched | - | 48 | 52 | - | - | - | |
| Reading | | | | | | | |
| % Expected Standard + | - | 52% ⬇️ | 38% ⬇️ | - | - | - | |
| % Higher Standard | - | 8% | 2% ⬇️ | - | - | - | |
| Writing | | | | | | | |
| % Expected Standard + | - | 31% ⬇️ | 37% ⬇️ | - | - | - | |
| % Higher Standard | - | 6% | 0% ⬇️ | - | - | - | |
| Maths | | | | | | | |
| % Expected Standard + | - | 44% ⬇️ | 54% ⬇️ | - | - | - | |
| % Higher Standard | - | 8% | 10% | - | - | - | |
| Science | | | | | | | |
| % Expected Standard + | - | 63% ⬇️ | 50% ⬇️ | - | - | - | |

Census information

KS1's latest academic year uses the context data provided in the school's MIS

2023 Value Added has only been calculated for pupils who we received EYFSP data as part of the 2021 FFT Results Service

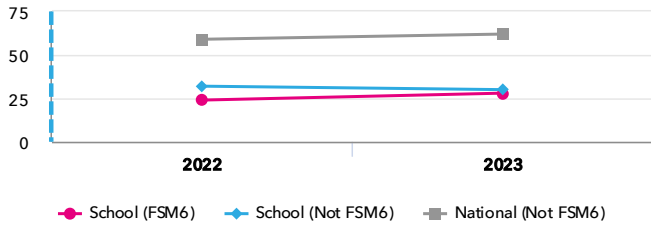
The Bishop's Church of England Primary Academy

2023 KS1 VA

Disadvantaged pupils

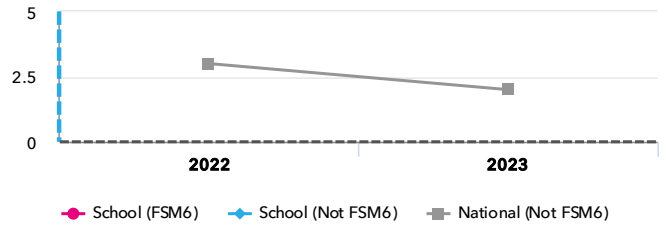
KS1 attainment for disadvantaged pupils 2023

% Expected Standard + (Re, Wr, Ma)



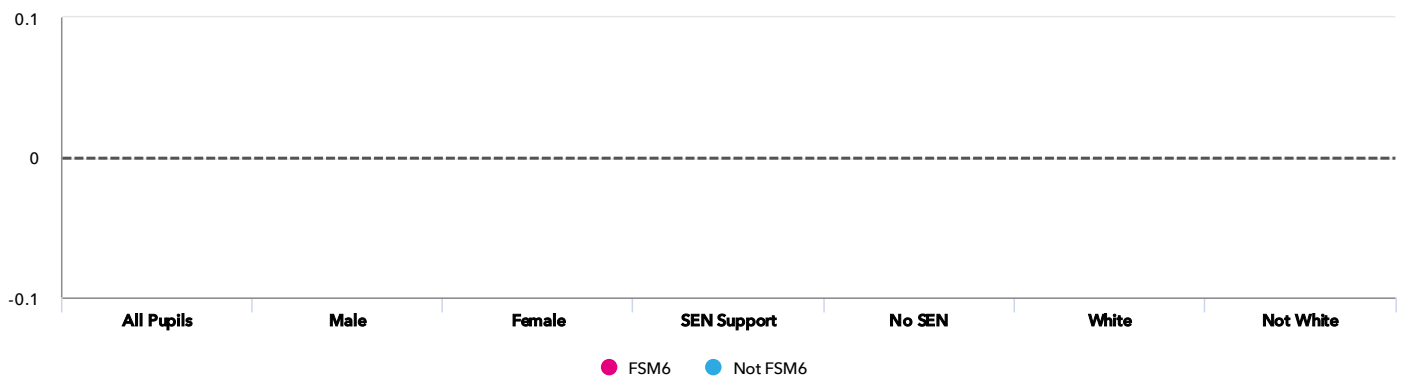
KS1 progress for disadvantaged pupils 2023

% Expected Standard + (Re, Wr, Ma)



Progress gap

% Expected Standard + (Re, Wr, Ma)



Attainment & progress

| | Pupils | Attainment | | | | | Progress | | |
|---------------------|-------------|------------|----------|------------------------------------|--------------------------------------|------|------------------------------------|----------|-----|
| | | FSM6 | Not FSM6 | % Expected Standard + (Re, Wr, Ma) | | | % Expected Standard + (Re, Wr, Ma) | | |
| | | | | FSM6 | Not FSM6 | Gap | FSM6 | Not FSM6 | Gap |
| Summary | All Pupils | 32 | 20 | 28% | 30% - | -2% | - | - | - |
| Gender | Male | 15 | 9 | 33% | 44% | -11% | - | - | - |
| | Female | 17 | 11 | 24% | 18% | 6% | - | - | - |
| SEN Group | SEN Support | 12 | 6 | 17% | 33% | -16% | - | - | - |
| | No SEN | 20 | 14 | 35% | 29% | 6% | - | - | - |
| Ethnic Group | White | 26 | 20 | 35% | 30% | 5% | - | - | - |
| | Not White | 6 | - | 0% | - | - | - | - | - |

Census information

KS1's latest academic year uses the context data provided in the school's MIS

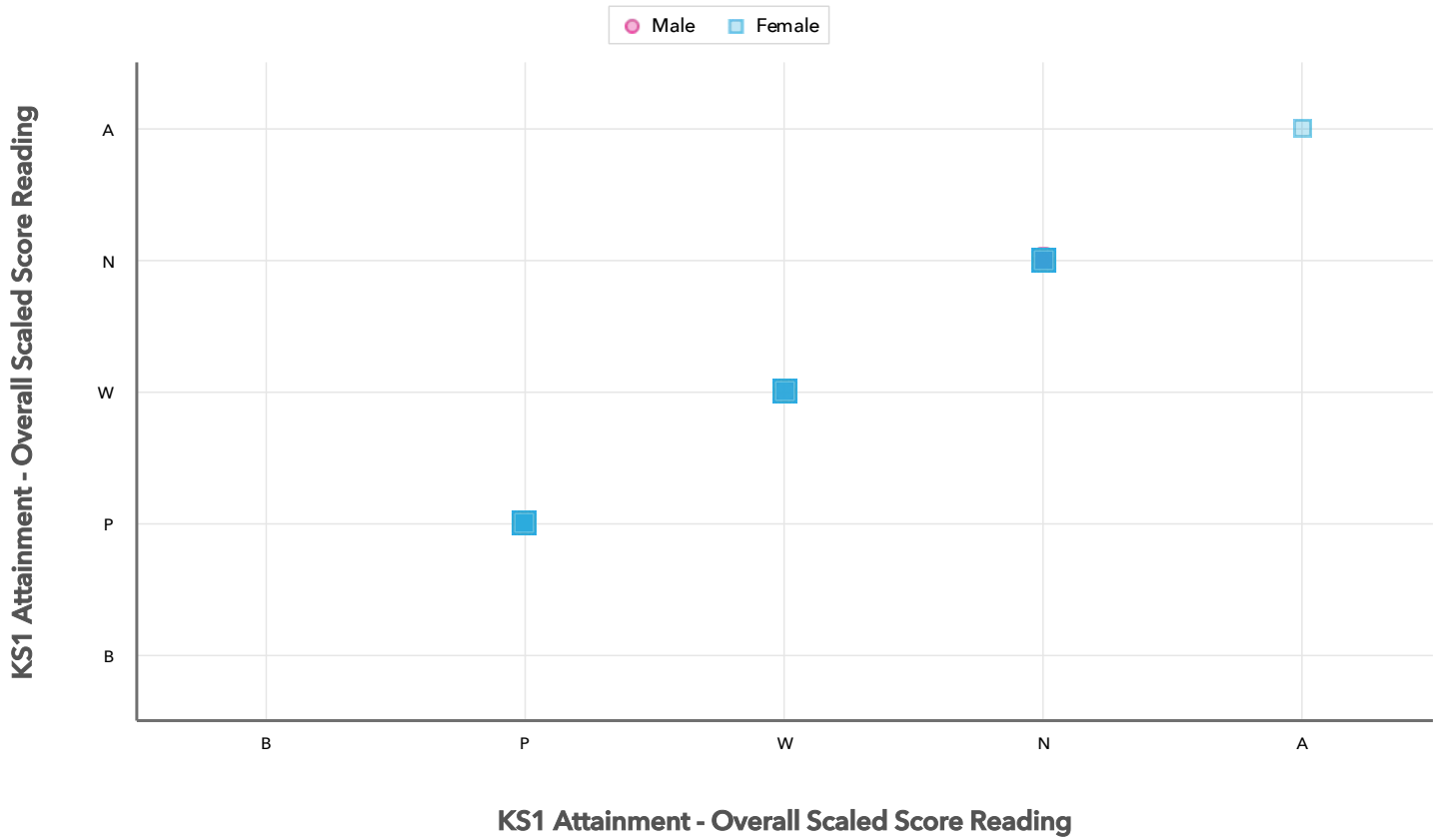
2023 Value Added has only been calculated for pupils who we received EYFSP data as part of the 2021 FFT Results Service

The Bishop's Church of England Primary Academy

2023 KS1 VA

Scatterplot

KS1 Pupil scatterplot 2023 52 pupils highlighted by Gender Gender ▾



Census information

KS1's latest academic year uses the context data provided in the school's MIS

Context

Context · Year 2

| | | Pupils | | Comparative profile 2022 / 2023 | | Absence during Key Stage 1 | | Persistent absence during Key Stage 1 | |
|----------------------|----------------------------|--------|--------|------------------------------------|--------|-------------------------------|--------|------------------------------------------|--|
| | | School | School | National | School | National | School | National | |
| Summary | All Pupils | 52 | 100% | 100% | - | - | - | - | |
| Gender | Male | 24 | 46% | 51% | - | - | - | - | |
| | Female | 28 | 54% | 49% | - | - | - | - | |
| Pupil Premium | FSM (in last 6 years) | 32 | 62% | 27% | - | - | - | - | |
| | Not FSM (in last 6 years) | 20 | 38% | 72% | - | - | - | - | |
| FSM | FSM | 32 | 62% | 26% | - | - | - | - | |
| | Not FSM | 20 | 38% | 73% | - | - | - | - | |
| Term of Birth | Summer Term | 21 | 40% | 34% | - | - | - | - | |
| | Spring Term | 19 | 37% | 32% | - | - | - | - | |
| | Autumn Term | 12 | 23% | 34% | - | - | - | - | |
| SEN Group | SEN Support | 18 | 35% | 14% | - | - | - | - | |
| | No SEN | 34 | 65% | 83% | - | - | - | - | |
| EAL | First language not English | 12 | 23% | 24% | - | - | - | - | |
| | First language English | 40 | 77% | 74% | - | - | - | - | |
| Ethnicity | White | 46 | 88% | 67% | - | - | - | - | |
| | Black Caribbean | 1 | 2% | 2% | - | - | - | - | |
| | Black African | 2 | 4% | 6% | - | - | - | - | |
| | Unknown | 3 | 6% | 1% | - | - | - | - | |

Census information

KS1's latest academic year uses the context data provided in the school's MIS

Your evaluation – Summary analysis

2023

Key Stage 1

Use this page to assess your performance, evaluate your interventions and summarise key actions for next year. Keep your evaluation clear and focused. Key actions should include timescales and owners.

Strengths

Areas for improvement

Key actions to improve performance

Reading analysis

Reports included in this section

Attainment & progress

Pupil groups

Disadvantaged pupils

Scatterplot

Confidential: Contains personal information



Key indicators

% Expected Standard + Reading

% Higher Standard Reading

Reading standard

VA

Value added

Achievement is compared with similar pupils nationally. The FFT VA model uses prior attainment, gender and month of birth as a starting point.

2023 Value Added has only been calculated for pupils who we received EYFSP data as part of the 2021 FFT Results Service

The Bishop's Church of England Primary Academy

2023 KS1 VA

Attainment & progress

KS1 Attainment 2023

52 pupils

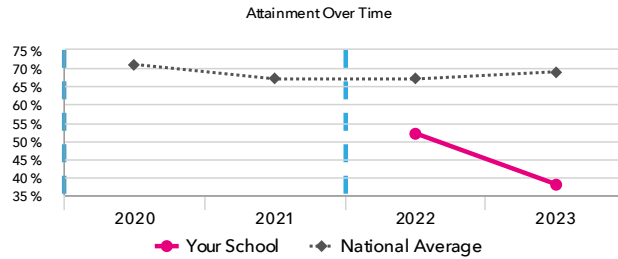
% Expected Standard + Reading DFE

38% ⬇️

FFT Rank



Significantly below the national average (69%)



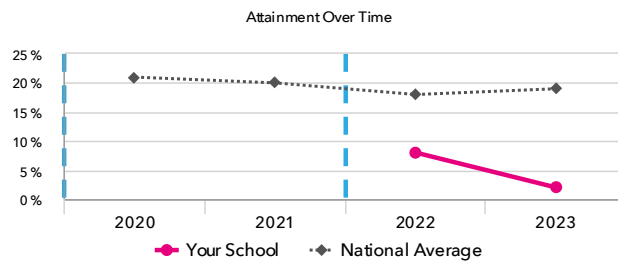
% Higher Standard Reading DFE

2% ⬇️

FFT Rank



Significantly below the national average (19%)



KS1 Progress 2023

% Expected Standard + Reading

█

FFT Rank



In line with the national average (0%)

% Higher Standard Reading

█

FFT Rank



In line with the national average (0%)

KS1 performance summary

| | Actual results | | | Pupil progress | | |
|------------------------------------|----------------|---------------------|---------------------|----------------|------|------|
| | 2021 | 2022 | 2023 | 2021 | 2022 | 2023 |
| Number of Pupils / % Matched | - | 48 | 52 | - | - | - |
| % Expected Standard + (Re, Wr, Ma) | - | 27% ⬇️ | 29% ⬇️ | - | - | - |
| % Higher Standard (Re, Wr, Ma) | - | 4% | 0% | - | - | - |
| % Expected Standard + Reading | - | 52% ⬇️ | 38% ⬇️ | - | - | - |
| % Higher Standard Reading | - | 8% | 2% ⬇️ | - | - | - |
| % Expected Standard + Writing | - | 31% ⬇️ | 37% ⬇️ | - | - | - |
| % Higher Standard Writing | - | 6% | 0% ⬇️ | - | - | - |
| % Expected Standard + Maths | - | 44% ⬇️ | 54% ⬇️ | - | - | - |
| % Higher Standard Maths | - | 8% | 10% | - | - | - |

Census information

KS1's latest academic year uses the context data provided in the school's MIS

2023 Value Added has only been calculated for pupils who we received EYFSP data as part of the 2021 FFT Results Service

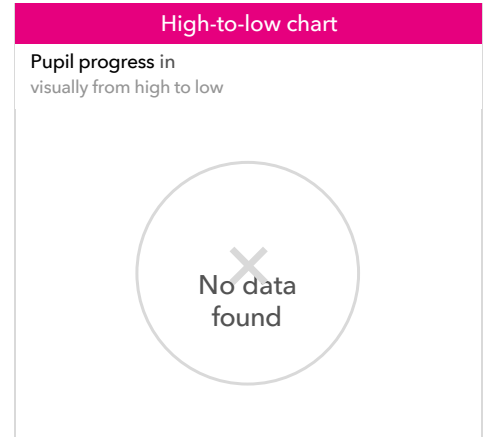
The Bishop's Church of England Primary Academy

2023 KS1 VA

Pupil groups

KS1 Pupil groups performance 2023

| | Pupils | Actual results | | Pupil progress | | |
|----------------------|----------------------------|--------------------------------------------------|-----------------------------------------------------------------------|-------------------------------------|---------------------------|---|
| | | % Expected Standard + Reading <small>DFE</small> | % Higher Standard Reading <small>DFE</small> | % Expected Standard + Reading | % Higher Standard Reading | |
| Summary | All Pupils | 52 | 38% ⊖ | 2% ⊖ | - | - |
| Gender | Male | 24 | 50% | 0% ⊖ | - | - |
| | Female | 28 | 29% ⊖ | 4% ⊖ | - | - |
| Pupil Premium | FSM (in last 6 years) | 32 | 31% ⊖ ↓ | 0% | - | - |
| | Not FSM (in last 6 years) | 20 | 50% ⊖ | 5% | - | - |
| FSM | FSM | 32 | 31% ⊖ ↓ | 0% | - | - |
| | Not FSM | 20 | 50% ⊖ | 5% | - | - |
| Term of Birth | Summer Term | 21 | 52% | 0% | - | - |
| | Spring Term | 19 | 26% ⊖ ↓ | 0% | - | - |
| | Autumn Term | 12 | 33% ⊖ | 8% | - | - |
| SEN Group | SEN Support | 18 | 33% | 0% | - | - |
| | No SEN | 34 | 41% ⊖ | 3% ⊖ | - | - |
| EAL | First language not English | 12 | 42% | 8% | - | - |
| | First language English | 40 | 38% ⊖ | 0% ⊖ | - | - |
| Ethnicity | White | 46 | 43% ⊖ | 2% ⊖ | - | - |
| | Black Caribbean | 1 | 0% | 0% | - | - |
| | Black African | 2 | 0% | 0% | - | - |
| | Unknown | 3 | 0% | 0% | - | - |



Census information

KS1's latest academic year uses the context data provided in the school's MIS

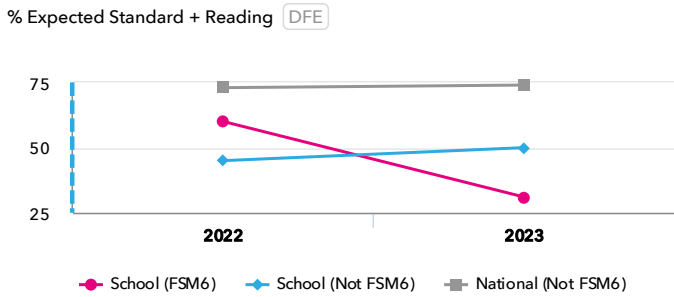
2023 Value Added has only been calculated for pupils who we received EYFSP data as part of the 2021 FFT Results Service

The Bishop's Church of England Primary Academy

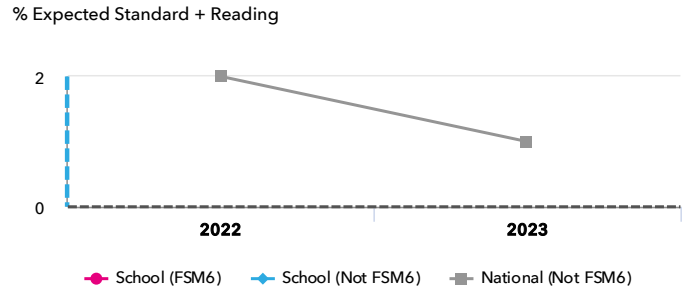
2023 KS1 VA

Disadvantaged pupils

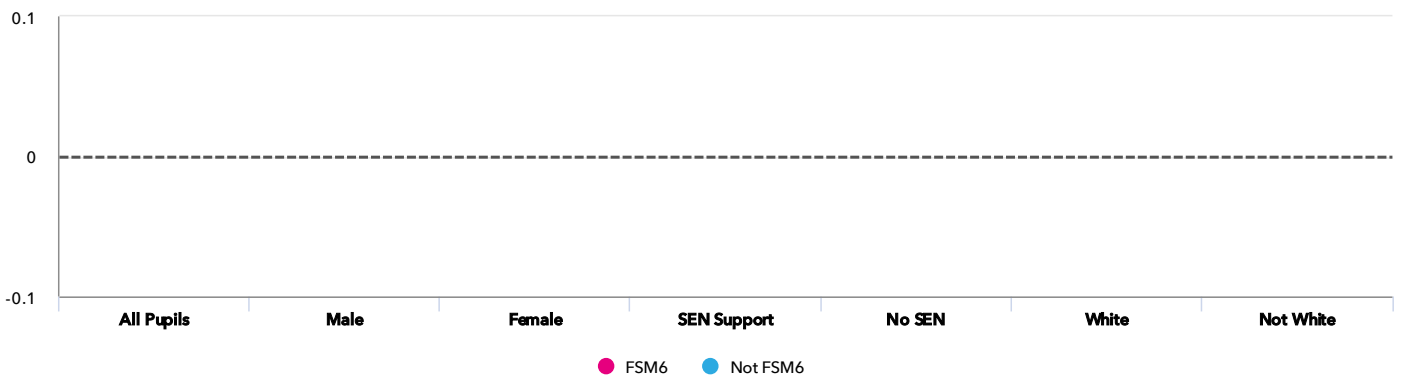
KS1 attainment for disadvantaged pupils 2023



KS1 progress for disadvantaged pupils 2023



Progress gap % Expected Standard + Reading



Attainment & progress

| Pupils | FSM6 | Not FSM6 | Attainment | | | Progress | | | |
|---------------------|-------------|----------|-------------------------------------|----------|--------|-------------------------------|----------|-----|---|
| | | | % Expected Standard + Reading (DFE) | | | % Expected Standard + Reading | | | |
| | | | FSM6 | Not FSM6 | Gap | FSM6 | Not FSM6 | Gap | |
| Summary | All Pupils | 32 | 20 | 31% ⬇️ | 50% ⬇️ | -19% | - | - | - |
| Gender | Male | 15 | 9 | 40% | 67% | -27% | - | - | - |
| | Female | 17 | 11 | 24% | 36% | -12% | - | - | - |
| SEN Group | SEN Support | 12 | 6 | 25% | 50% | -25% | - | - | - |
| | No SEN | 20 | 14 | 35% | 50% | -15% | - | - | - |
| Ethnic Group | White | 26 | 20 | 38% | 50% | -12% | - | - | - |
| | Not White | 6 | - | 0% | - | - | - | - | - |

Census information

KS1's latest academic year uses the context data provided in the school's MIS

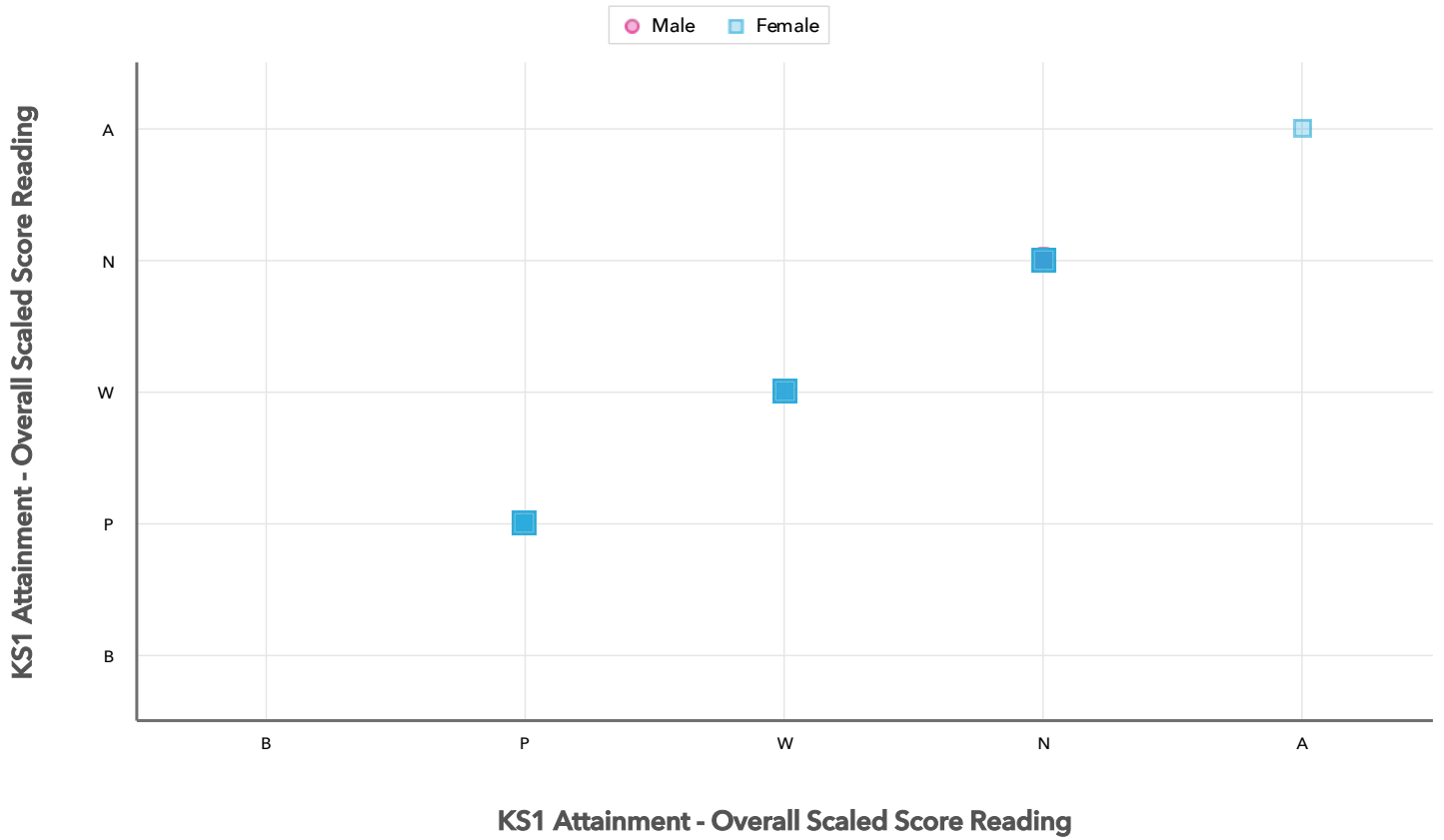
2023 Value Added has only been calculated for pupils who we received EYFSP data as part of the 2021 FFT Results Service

The Bishop's Church of England Primary Academy

2023 KS1 VA

Scatterplot

KS1 Pupil scatterplot 2023 52 pupils highlighted by Gender Gender ▾



Census information

KS1's latest academic year uses the context data provided in the school's MIS

Your evaluation – Reading analysis

2023

Key Stage 1

Use this page to assess your performance, evaluate your interventions and summarise key actions for next year. Keep your evaluation clear and focused. Key actions should include timescales and owners.

Strengths

Areas for improvement

Key actions to improve performance

Maths analysis

Reports included in this section

Attainment & progress

Pupil groups

Disadvantaged pupils

Scatterplot

Confidential: Contains personal information



Key indicators

% Expected Standard + Maths

% Higher Standard Maths

Maths standard

VA

Value added

Achievement is compared with similar pupils nationally. The FFT VA model uses prior attainment, gender and month of birth as a starting point.

2023 Value Added has only been calculated for pupils who we received EYFSP data as part of the 2021 FFT Results Service

The Bishop's Church of England Primary Academy

2023 KS1 VA

Attainment & progress

KS1 Attainment 2023

52 pupils

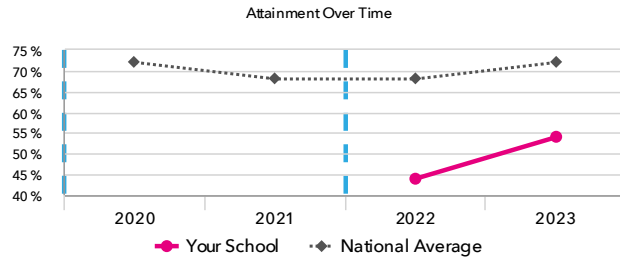
% Expected Standard + Maths DFE

54% ⬇️

FFT Rank



Significantly below the national average (72%)



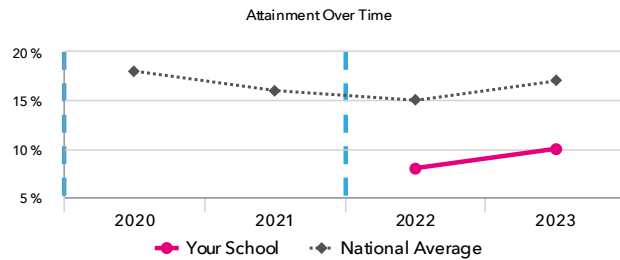
% Higher Standard Maths DFE

10%

FFT Rank



In line with the national average (17%)



KS1 Progress 2023

% Expected Standard + Maths

0%

FFT Rank



In line with the national average (0%)

% Higher Standard Maths

0%

FFT Rank



In line with the national average (0%)

KS1 performance summary

| | Actual results | | | Pupil progress | | |
|------------------------------------|----------------|---------------------|---------------------|----------------|------|------|
| | 2021 | 2022 | 2023 | 2021 | 2022 | 2023 |
| Number of Pupils / % Matched | - | 48 | 52 | - | - | - |
| % Expected Standard + (Re, Wr, Ma) | - | 27% ⬇️ | 29% ⬇️ | - | - | - |
| % Higher Standard (Re, Wr, Ma) | - | 4% | 0% | - | - | - |
| % Expected Standard + Reading | - | 52% ⬇️ | 38% ⬇️ | - | - | - |
| % Higher Standard Reading | - | 8% | 2% ⬇️ | - | - | - |
| % Expected Standard + Writing | - | 31% ⬇️ | 37% ⬇️ | - | - | - |
| % Higher Standard Writing | - | 6% | 0% ⬇️ | - | - | - |
| % Expected Standard + Maths | - | 44% ⬇️ | 54% ⬇️ | - | - | - |
| % Higher Standard Maths | - | 8% | 10% | - | - | - |

Census information

KS1's latest academic year uses the context data provided in the school's MIS

2023 Value Added has only been calculated for pupils who we received EYFSP data as part of the 2021 FFT Results Service

The Bishop's Church of England Primary Academy

2023

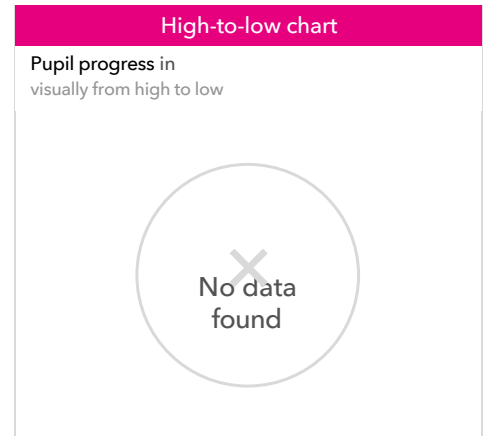
KS1

VA

Pupil groups

KS1 Pupil groups performance 2023

| | Pupils | Actual results | | Pupil progress | | |
|----------------------|----------------------------|------------------------------------------------|--------------------------------------------|-----------------------------|-------------------------|---|
| | | % Expected Standard + Maths <small>DFE</small> | % Higher Standard Maths <small>DFE</small> | % Expected Standard + Maths | % Higher Standard Maths | |
| Summary | All Pupils | 52 | 54% ⊖ | 10% | - | - |
| Gender | Male | 24 | 58% | 17% | - | - |
| | Female | 28 | 50% ⊖ | 4% | - | - |
| Pupil Premium | FSM (in last 6 years) | 32 | 53% | 6% | - | - |
| | Not FSM (in last 6 years) | 20 | 55% ⊖ | 15% | - | - |
| FSM | FSM | 32 | 53% | 6% | - | - |
| | Not FSM | 20 | 55% ⊖ | 15% | - | - |
| Term of Birth | Summer Term | 21 | 48% | 0% | - | - |
| | Spring Term | 19 | 58% | 11% | - | - |
| | Autumn Term | 12 | 58% | 25% | - | - |
| SEN Group | SEN Support | 18 | 44% | 6% | - | - |
| | No SEN | 34 | 59% ⊖ | 12% | - | - |
| EAL | First language not English | 12 | 58% | 17% | - | - |
| | First language English | 40 | 53% ⊖ | 8% | - | - |
| Ethnicity | White | 46 | 57% ⊖ | 11% | - | - |
| | Black Caribbean | 1 | 0% | 0% | - | - |
| | Black African | 2 | 50% | 0% | - | - |
| | Unknown | 3 | 33% | 0% | - | - |



Census information

KS1's latest academic year uses the context data provided in the school's MIS

2023 Value Added has only been calculated for pupils who we received EYFSP data as part of the 2021 FFT Results Service

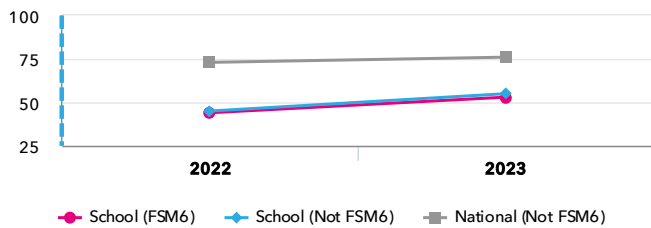
The Bishop's Church of England Primary Academy

2023 KS1 VA

Disadvantaged pupils

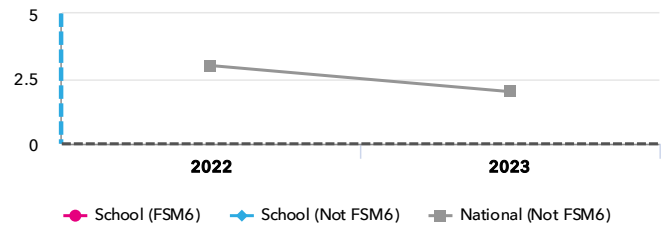
KS1 attainment for disadvantaged pupils 2023

% Expected Standard + Maths DFE

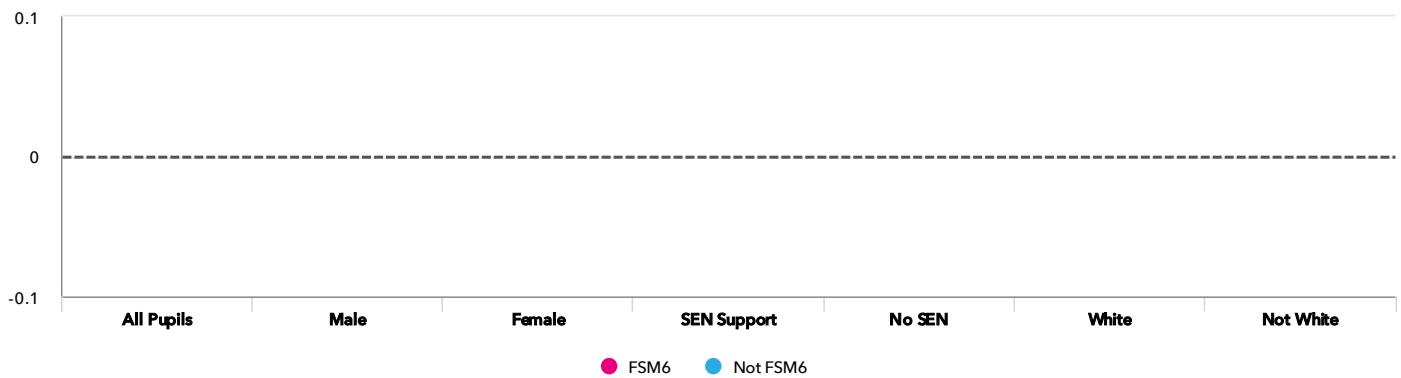


KS1 progress for disadvantaged pupils 2023

% Expected Standard + Maths



Progress gap % Expected Standard + Maths



Attainment & progress

| | Pupils | Attainment | | | | | Progress | | |
|---------------------|-------------|------------|----------|----------------------------------------------|--------------------|------|-----------------------------|----------|-----|
| | | FSM6 | Not FSM6 | % Expected Standard + Maths DFE | | | % Expected Standard + Maths | | |
| | | | | FSM6 | Not FSM6 | Gap | FSM6 | Not FSM6 | Gap |
| Summary | All Pupils | 32 | 20 | 53% | 55% ⊖ | -2% | - | - | - |
| Gender | Male | 15 | 9 | 53% | 67% | -14% | - | - | - |
| | Female | 17 | 11 | 53% | 45% | 8% | - | - | - |
| SEN Group | SEN Support | 12 | 6 | 42% | 50% | -8% | - | - | - |
| | No SEN | 20 | 14 | 60% | 57% | 3% | - | - | - |
| Ethnic Group | White | 26 | 20 | 58% | 55% | 3% | - | - | - |
| | Not White | 6 | - | 33% | - | - | - | - | - |

Census information

KS1's latest academic year uses the context data provided in the school's MIS

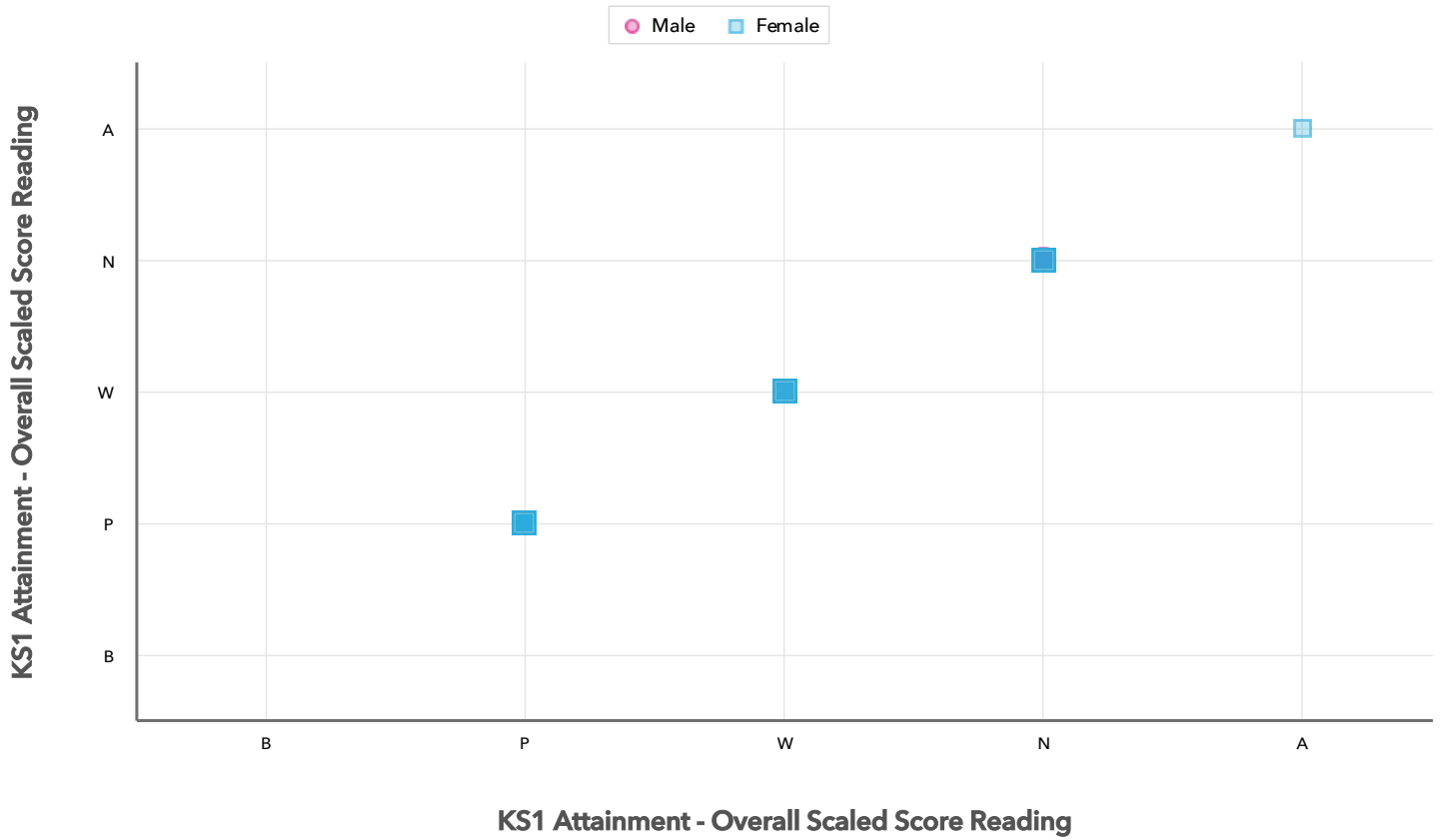
2023 Value Added has only been calculated for pupils who we received EYFSP data as part of the 2021 FFT Results Service

The Bishop's Church of England Primary Academy

2023 KS1 VA

Scatterplot

KS1 Pupil scatterplot 2023 52 pupils highlighted by Gender Gender ▾



Census information

KS1's latest academic year uses the context data provided in the school's MIS

Your evaluation – Maths analysis

2023

Key Stage 1

Use this page to assess your performance, evaluate your interventions and summarise key actions for next year. Keep your evaluation clear and focused. Key actions should include timescales and owners.

Strengths

Areas for improvement

Key actions to improve performance

Writing analysis

Reports included in this section

Attainment & progress

Pupil groups

Disadvantaged pupils

Scatterplot

Confidential: Contains personal information



Key indicators

% Expected Standard + Writing

% Higher Standard Writing

Writing standard

VA

Value added

Achievement is compared with similar pupils nationally. The FFT VA model uses prior attainment, gender and month of birth as a starting point.

2023 Value Added has only been calculated for pupils who we received EYFSP data as part of the 2021 FFT Results Service

The Bishop's Church of England Primary Academy

2023 KS1 VA

Attainment & progress

KS1 Attainment 2023

52 pupils

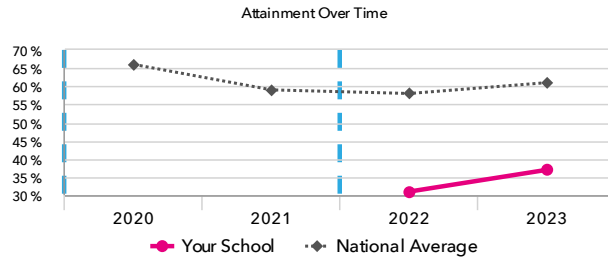
% Expected Standard + Writing DFE

37% ⬇️

FFT Rank



Significantly below the national average (61%)



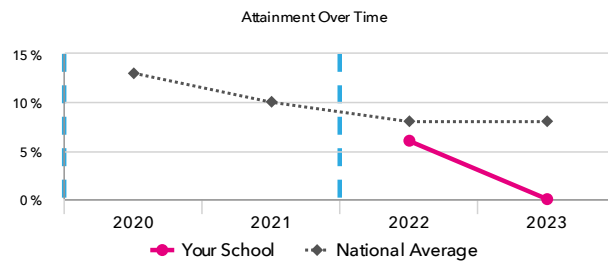
% Higher Standard Writing DFE

0% ⬇️

FFT Rank



Significantly below the national average (8%)



KS1 Progress 2023

% Expected Standard + Writing

—

FFT Rank



In line with the national average (0%)

% Higher Standard Writing

—

FFT Rank



In line with the national average (0%)

KS1 performance summary

| | Actual results | | | Pupil progress | | |
|------------------------------------|----------------|---------------------|---------------------|----------------|------|------|
| | 2021 | 2022 | 2023 | 2021 | 2022 | 2023 |
| Number of Pupils / % Matched | - | 48 | 52 | - | - | - |
| % Expected Standard + (Re, Wr, Ma) | - | 27% ⬇️ | 29% ⬇️ | - | - | - |
| % Higher Standard (Re, Wr, Ma) | - | 4% | 0% | - | - | - |
| % Expected Standard + Reading | - | 52% ⬇️ | 38% ⬇️ | - | - | - |
| % Higher Standard Reading | - | 8% | 2% ⬇️ | - | - | - |
| % Expected Standard + Writing | - | 31% ⬇️ | 37% ⬇️ | - | - | - |
| % Higher Standard Writing | - | 6% | 0% ⬇️ | - | - | - |
| % Expected Standard + Maths | - | 44% ⬇️ | 54% ⬇️ | - | - | - |
| % Higher Standard Maths | - | 8% | 10% | - | - | - |

Census information

KS1's latest academic year uses the context data provided in the school's MIS

2023 Value Added has only been calculated for pupils who we received EYFSP data as part of the 2021 FFT Results Service

The Bishop's Church of England Primary Academy

2023

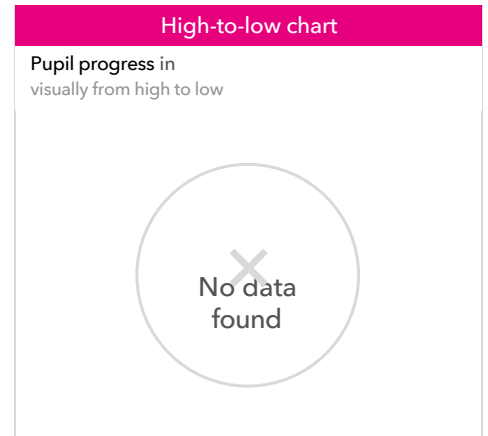
KS1

VA

Pupil groups

KS1 Pupil groups performance 2023

| | Pupils | Actual results | | Pupil progress | | |
|----------------------|----------------------------|--------------------------------------------------|----------------------------------------------|-------------------------------------|---------------------------|---|
| | | % Expected Standard + Writing <small>DFE</small> | % Higher Standard Writing <small>DFE</small> | % Expected Standard + Writing | % Higher Standard Writing | |
| Summary | All Pupils | 52 | 37% ⬇ | 0% ⬇ | - | - |
| Gender | Male | 24 | 38% | 0% | - | - |
| | Female | 28 | 36% ⬇ | 0% | - | - |
| Pupil Premium | FSM (in last 6 years) | 32 | 34% | 0% | - | - |
| | Not FSM (in last 6 years) | 20 | 40% ⬇ | 0% | - | - |
| FSM | FSM | 32 | 34% | 0% | - | - |
| | Not FSM | 20 | 40% ⬇ | 0% | - | - |
| Term of Birth | Summer Term | 21 | 43% | 0% | - | - |
| | Spring Term | 19 | 37% ⬇ | 0% | - | - |
| | Autumn Term | 12 | 25% ⬇ | 0% | - | - |
| SEN Group | SEN Support | 18 | 22% | 0% | - | - |
| | No SEN | 34 | 44% ⬇ | 0% | - | - |
| EAL | First language not English | 12 | 25% ⬇ | 0% | - | - |
| | First language English | 40 | 40% ⬇ | 0% | - | - |
| Ethnicity | White | 46 | 39% ⬇ | 0% | - | - |
| | Black Caribbean | 1 | 0% | 0% | - | - |
| | Black African | 2 | 50% | 0% | - | - |
| | Unknown | 3 | 0% | 0% | - | - |



Census information

KS1's latest academic year uses the context data provided in the school's MIS

2023 Value Added has only been calculated for pupils who we received EYFSP data as part of the 2021 FFT Results Service

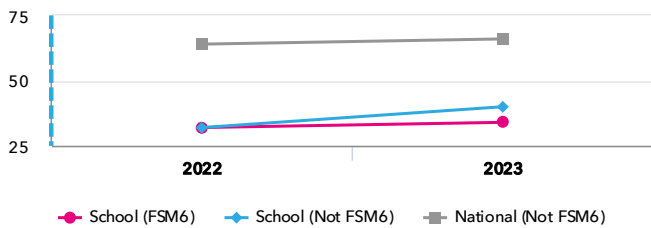
The Bishop's Church of England Primary Academy

2023 KS1 VA

Disadvantaged pupils

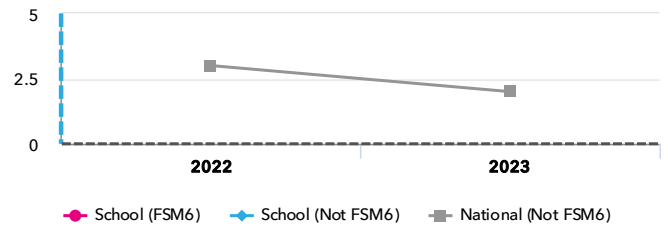
KS1 attainment for disadvantaged pupils 2023

% Expected Standard + Writing DFE

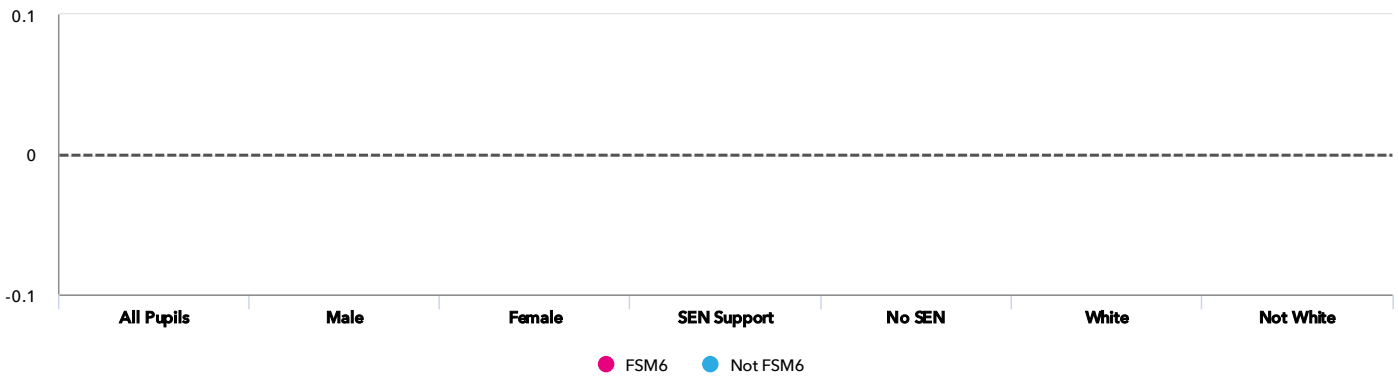


KS1 progress for disadvantaged pupils 2023

% Expected Standard + Writing



Progress gap % Expected Standard + Writing



Attainment & progress

| Pupils | Attainment | | | Progress | | | | | |
|---------------------|-------------|----------|------------------------------------------------|----------|--------------------|------|----------|-----|---|
| | FSM6 | Not FSM6 | % Expected Standard + Writing DFE | | | FSM6 | Not FSM6 | Gap | |
| | | | FSM6 | Not FSM6 | Gap | | | | |
| Summary | All Pupils | 32 | 20 | 34% | 40% ⊖ | -6% | - | - | - |
| Gender | Male | 15 | 9 | 33% | 44% | -11% | - | - | - |
| | Female | 17 | 11 | 35% | 36% | -1% | - | - | - |
| SEN Group | SEN Support | 12 | 6 | 17% | 33% | -16% | - | - | - |
| | No SEN | 20 | 14 | 45% | 43% | 2% | - | - | - |
| Ethnic Group | White | 26 | 20 | 38% | 40% | -2% | - | - | - |
| | Not White | 6 | - | 17% | - | - | - | - | - |

Census information

KS1's latest academic year uses the context data provided in the school's MIS

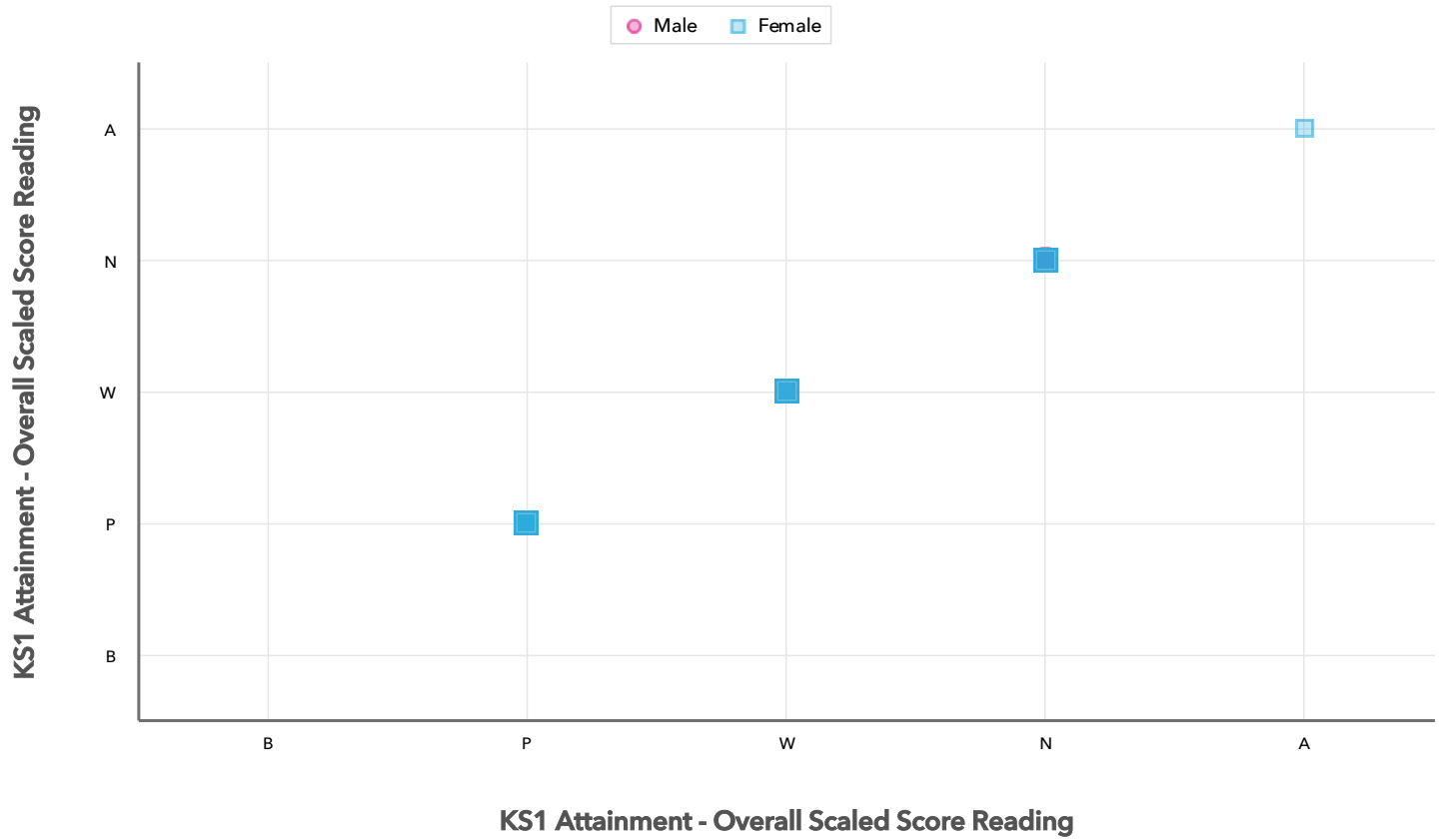
2023 Value Added has only been calculated for pupils who we received EYFSP data as part of the 2021 FFT Results Service

The Bishop's Church of England Primary Academy

2023 KS1 VA

Scatterplot

KS1 Pupil scatterplot 2023 52 pupils highlighted by Gender Gender ▾



Census information

KS1's latest academic year uses the context data provided in the school's MIS

Your evaluation – Writing analysis

2023

Key Stage 1

Use this page to assess your performance, evaluate your interventions and summarise key actions for next year. Keep your evaluation clear and focused. Key actions should include timescales and owners.

Strengths

Areas for improvement

Key actions to improve performance