

# 2023 KS2 Extended School Dashboard

for headteachers, senior leaders & teachers

Produce custom dashboards  
at [fftaspire.org](https://fftaspire.org)

## The Bishop's Church of England Primary Academy

LA Norfolk DFE 9262118 Produced September 2023

### What it is

The FFT Extended School Dashboard provides headteachers, senior leaders and teachers with a more detailed analysis of school performance.

The dashboard consists of five individual sections – Summary, Reading, Maths, Writing, GPS – and includes additional reports not found in the standard FFT School Dashboard.

### What it tells you

What are the strengths, areas for improvement and under-performing groups of pupils

How does attainment and pupil progress compare to the national average this academic year?

How are you performing in different subjects?

How might the context of your school affect performance?

### Important for 2023

2023 data has been calculated using the teacher assessment data uploaded by schools who participated in the 2023 FFT Assessment Service. **The data is for internal use only and is NOT intended to be used for external accountability.**

### About the data shown

1 2 3

#### Actual results

Actual results for your school, using a range of measures such as averages and thresholds.



#### Gauges

These display headline indicators and whether actual results and pupils' progress are in line with, or significantly above or below, the national average.

ESTIMATED

1 2 3

#### Pupil progress

The value added progress that your pupils have made from one key stage to the next. FFT compares your actual results to the estimated results based on the progress of similar pupils nationally.



#### Statistical significance

Green plus signs and red minus signs highlight where either actual results or pupils' progress is significantly above or below the national average.



#### Trends

The dashboard analyses school performance over 3-5 years. Any significant year-on-year improvement is highlighted using an up arrow. Significant declines in performance are highlighted with a down arrow.



#### Strengths & weaknesses

These highlight key pupil groups and subjects where progress is above or below the national average.

### Working in partnership with



### Data sources

Generated from FFT Aspire which includes data sourced from the DfE (National Pupil Database) and data calculated by FFT. FFT is accredited as a DfE supplier to receive early access to ASP data. Headline performance indicators will be consistent with the DfE School Performance Tables and ASP.

## Summary analysis

### Reports included in this section

Overview

Attainment & progress

Pupil groups

Subjects

Disadvantaged pupils

Scatterplot

**Confidential:** Contains personal information

Context



### Key indicators

Average Scaled Score (Re, Ma)

% Expected standard+ (Re, Wr, Ma)

% Higher standard (Re, Wr, Ma)

% Expected standard+ Reading

% Expected standard+ Maths

% Expected standard+ Writing

% Expected standard+ Grammar,  
Punctuation & Spelling

% Expected standard+ Science

VA

### Value added

Achievement is compared with similar pupils nationally. The FFT VA model uses prior attainment, gender and month of birth as a starting point.

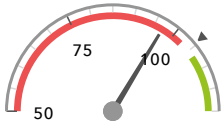
# Overview

## KS2 Attainment 2023 · Actual results

50 pupils

Average Scaled Score (Re, Ma)

97.1 -

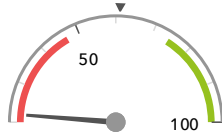


Significantly below the national average (104.6) ◀

% Expected standard+ (Re, Wr, Ma)

DFE

22% -



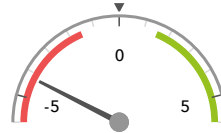
Significantly below the national average (61%) ◀

## KS2 Progress 2023 · Value Added

50 matched pupils

Average Scaled Score (Re, Ma)

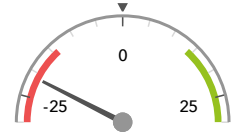
-4.2 - ↓



Significantly below the national average (0) ◀

% Expected standard+ (Re, Wr, Ma)

-21% -



Significantly below the national average (0%) ◀

## KS2 higher and lower performing pupil groups 2023

Minimum group size: 5

	Higher performing	Lower performing
<b>Overall achievement</b> pupil progress		Middle attainers (18) <span style="color: red;">-</span> FSM (28) <span style="color: red;">-</span> FSM (in last 6 years) (28) <span style="color: red;">-</span>
<b>KS2 reading achievement</b> pupil progress		FSM (28) <span style="color: red;">-</span> FSM (in last 6 years) (28) <span style="color: red;">-</span> Summer Term (17) <span style="color: red;">-</span> <span style="color: red;">↓</span>
<b>KS2 writing achievement</b> pupil progress		Summer Term (17) <span style="color: red;">-</span> Middle attainers (18) <span style="color: red;">-</span> SEN Support (15) <span style="color: red;">-</span>
<b>KS2 mathematics achievement</b> pupil progress		Middle attainers (18) <span style="color: red;">-</span> First language English (32) <span style="color: red;">-</span> Autumn Term (21) <span style="color: red;">-</span>

### Census information

KS2's latest academic year uses the context data provided in the school's MIS

# Attainment & progress

## KS2 Attainment 2023

50 pupils

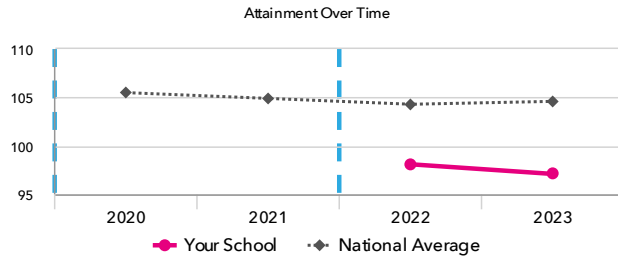
Average Scaled Score (Re, Ma)

97.1 -

FFT Rank

100 BETTER ▶ 1

Significantly below the national average (104.6)



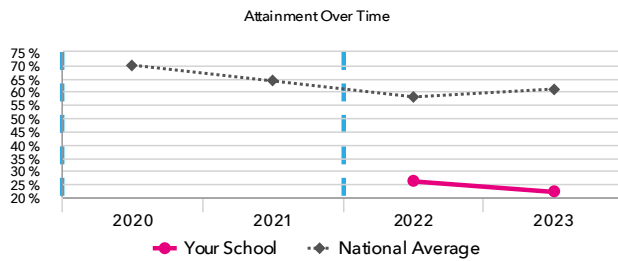
% Expected standard+ (Re, Wr, Ma) DFE

22% -

FFT Rank

100 BETTER ▶ 1

Significantly below the national average (61%)



## KS2 Progress 2023

50 matched pupils

Average Scaled Score (Re, Ma)

-4.2 - ↓

FFT Rank

100 BETTER ▶ 1

Significantly below the national average (0)

% Expected standard+ (Re, Wr, Ma)

-21% -

FFT Rank

100 BETTER ▶ 1

Significantly below the national average (0%)

## KS2 performance summary

	Actual results			Pupil progress		
	2021	2022	2023	2021	2022	2023
Number of Pupils / % Matched	-	56	50	-	98%	100%
% Expected standard+ (Re, Wr, Ma)	-	26% <span style="color: red;">-</span>	22% <span style="color: red;">-</span>	-	-17% <span style="color: red;">-</span>	-21% <span style="color: red;">-</span>
% Higher standard (Re, Wr, Ma)	-	0% <span style="color: red;">-</span>	0% <span style="color: red;">-</span>	-	-5% <span style="color: red;">-</span>	-4% <span style="color: red;">-</span>
Average Scaled Score (Re, GPS, Ma)	-	97.9 <span style="color: red;">-</span>	97.1 <span style="color: red;">-</span>	-	-1.9 <span style="color: red;">-</span>	-4.0 <span style="color: red;">-</span> ↓
Average Scaled Score (Re, Ma)	-	98.1 <span style="color: red;">-</span>	97.1 <span style="color: red;">-</span>	-	-1.9 <span style="color: red;">-</span>	-4.2 <span style="color: red;">-</span> ↓
% Expected standard+ Reading	-	50% <span style="color: red;">-</span>	30% <span style="color: red;">-</span> ↓	-	-10% <span style="color: red;">-</span>	-29% <span style="color: red;">-</span>
% Higher standard Reading	-	7% <span style="color: red;">-</span>	10% <span style="color: red;">-</span>	-	-14% <span style="color: red;">-</span>	-8% <span style="color: red;">-</span>
Scaled Score Reading	-	98.4 <span style="color: red;">-</span>	96.7 <span style="color: red;">-</span>	-	-1.7 <span style="color: red;">-</span>	-4.5 <span style="color: red;">-</span> ↓
% Expected standard+ Writing	-	34% <span style="color: red;">-</span>	30% <span style="color: red;">-</span>	-	-18% <span style="color: red;">-</span>	-24% <span style="color: red;">-</span>
% Higher standard Writing	-	0% <span style="color: red;">-</span>	0% <span style="color: red;">-</span>	-	-9% <span style="color: red;">-</span>	-6% <span style="color: red;">-</span>
Scaled Score Writing	-	91.9 <span style="color: red;">-</span>	92.9 <span style="color: red;">-</span>	-	-3.9 <span style="color: red;">-</span>	-3.0 <span style="color: red;">-</span>
% Expected standard+ Maths	-	50% <span style="color: red;">-</span>	34% <span style="color: red;">-</span>	-	-7% <span style="color: red;">-</span>	-24% <span style="color: red;">-</span>
% Higher standard Maths	-	5% <span style="color: red;">-</span>	4% <span style="color: red;">-</span>	-	-11% <span style="color: red;">-</span>	-10% <span style="color: red;">-</span>
Scaled Score Maths	-	97.8 <span style="color: red;">-</span>	97.1 <span style="color: red;">-</span>	-	-1.7 <span style="color: red;">-</span>	-3.9 <span style="color: red;">-</span>
% Expected standard+ Grammar, Punctuation & Spelling	-	43% <span style="color: red;">-</span>	30% <span style="color: red;">-</span>	-	-13% <span style="color: red;">-</span>	-25% <span style="color: red;">-</span>
% Higher standard Grammar, Punctuation & Spelling	-	11% <span style="color: red;">-</span>	4% <span style="color: red;">-</span>	-	-9% <span style="color: red;">-</span>	-14% <span style="color: red;">-</span>
Scaled Score Grammar, Punctuation & Spelling	-	97.8 <span style="color: red;">-</span>	96.8 <span style="color: red;">-</span>	-	-2.1 <span style="color: red;">-</span>	-3.8 <span style="color: red;">-</span>
% Expected standard+ Science	-	57% <span style="color: red;">-</span>	52% <span style="color: red;">-</span>	-	-	-

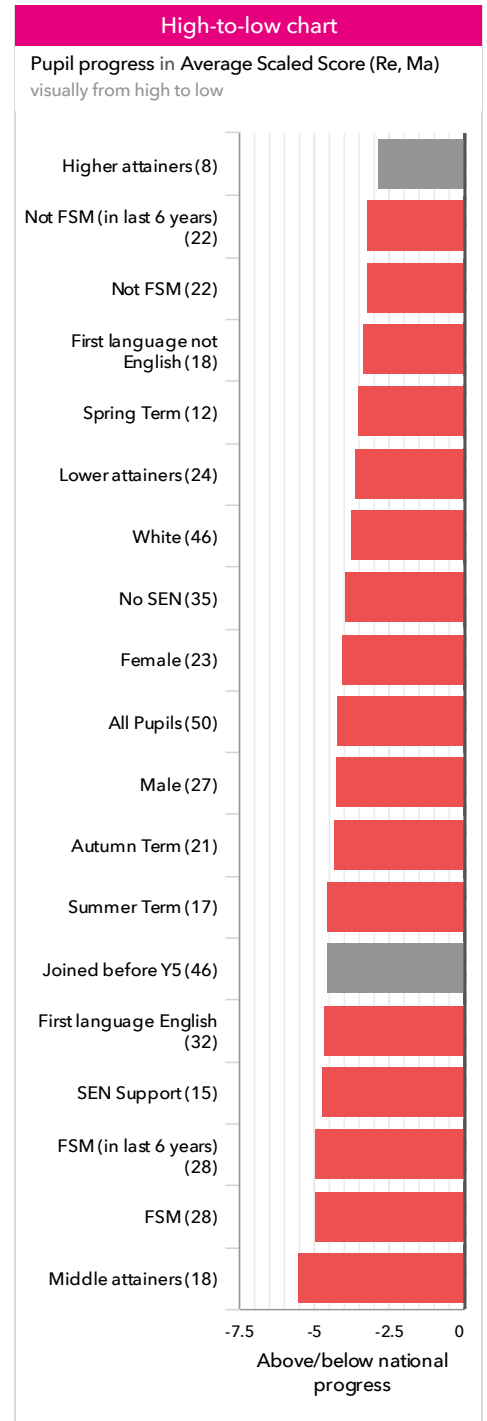
### Census information

KS2's latest academic year uses the context data provided in the school's MIS

# Pupil groups

## KS2 Pupil groups performance 2023

		Actual results			Pupil progress			
	Pupils	Average Scaled Score (Re, Ma)	% Expected standard+ (Re, Wr, Ma) <small>DFE</small>	% Higher standard (Re, Wr, Ma) <small>DFE</small>	Average Scaled Score (Re, Ma)	% Expected standard+ (Re, Wr, Ma)	% Higher standard (Re, Wr, Ma)	
<b>Summary</b>	All Pupils	50	97.1 <span>⬇️</span>	22% <span>⬇️</span>	0% <span>⬇️</span>	-4.2 <span>⬇️</span> <span>⬇️</span>	-21% <span>⬇️</span>	-4%
<b>Gender</b>	Male	27	96.5 <span>⬇️</span>	19% <span>⬇️</span>	0%	-4.3 <span>⬇️</span>	-16%	-2%
	Female	23	97.6 <span>⬇️</span>	26% <span>⬇️</span>	0%	-4.1 <span>⬇️</span>	-26% <span>⬇️</span>	-5%
<b>DFE Prior Attainment</b>	Higher attainers	8	107.4	88%	0%	-2.9	-6%	-19%
	Middle attainers	18	98.4 <span>⬇️</span>	22% <span>⬇️</span>	0%	-5.5 <span>⬇️</span>	-39% <span>⬇️</span>	-1%
	Lower attainers	24	92.0 <span>⬇️</span>	0%	0%	-3.6 <span>⬇️</span> <span>⬇️</span>	-11%	-0%
<b>Pupil Premium</b>	FSM (in last 6 years)	28	95.0 <span>⬇️</span>	11% <span>⬇️</span>	0%	-5.0 <span>⬇️</span>	-27% <span>⬇️</span>	-3%
	Not FSM (in last 6 years)	22	99.5 <span>⬇️</span>	36% <span>⬇️</span>	0%	-3.2 <span>⬇️</span>	-12%	-5%
<b>FSM</b>	FSM	28	95.0 <span>⬇️</span>	11% <span>⬇️</span>	0%	-5.0 <span>⬇️</span>	-27% <span>⬇️</span>	-3%
	Not FSM	22	99.5 <span>⬇️</span>	36% <span>⬇️</span>	0%	-3.2 <span>⬇️</span>	-12%	-5%
<b>Term of Birth</b>	Autumn Term	21	99.4 <span>⬇️</span>	33% <span>⬇️</span>	0%	-4.3 <span>⬇️</span>	-23% <span>⬇️</span>	-5%
	Spring Term	12	95.7 <span>⬇️</span>	17% <span>⬇️</span>	0%	-3.5 <span>⬇️</span>	-19%	-3%
	Summer Term	17	95.0 <span>⬇️</span>	12% <span>⬇️</span>	0%	-4.5 <span>⬇️</span> <span>⬇️</span>	-19%	-2%
<b>SEN Group</b>	SEN Support	15	96.1	20%	0%	-4.7 <span>⬇️</span>	-12%	-3%
	No SEN	35	97.4 <span>⬇️</span>	23% <span>⬇️</span>	0%	-4.0 <span>⬇️</span>	-24% <span>⬇️</span>	-4%
<b>EAL</b>	First language not English	18	95.5 <span>⬇️</span> <span>⬇️</span>	17% <span>⬇️</span>	0%	-3.4 <span>⬇️</span>	-22%	-2%
	First language English	32	98.0 <span>⬇️</span>	25% <span>⬇️</span>	0%	-4.6 <span>⬇️</span>	-20% <span>⬇️</span>	-4%
<b>Mobility</b>	Joined in Y5 or Y6	4	93.1	0%	0%	-0.0	-13%	-0%
	Joined before Y5	46	97.4	24%	0%	-4.5	-21%	-4%
<b>Ethnicity</b>	White	46	97.4 <span>⬇️</span>	24% <span>⬇️</span>	0%	-3.7 <span>⬇️</span>	-18% <span>⬇️</span>	-4%
	Black Caribbean	2	92.3	0%	0%	-9.1	-39%	-0%
	Black African	1	97.5	0%	0%	-6.7	-68%	-2%
	Unknown	1	91.0	0%	0%	-12.0	-50%	-0%



### Census information

KS2's latest academic year uses the context data provided in the school's MIS

# Subjects

## KS2 subject performance 2023

	Actual results			Pupil progress			Actual results over time		
	2021	2022	2023	2021	2022	2023			
Number of Pupils / % Matched	-	56	50	-	98%	100%			
<b>Reading</b>									
% Expected standard+	-	50% <span style="color:red">⬇</span>	30% <span style="color:red">⬇</span>	-	-10%	-29% <span style="color:red">⬇</span>			
% Higher standard	-	7% <span style="color:red">⬇</span>	10% <span style="color:red">⬇</span>	-	-14% <span style="color:red">⬇</span>	-8%			
Scaled Score	-	98 <span style="color:red">⬇</span>	97 <span style="color:red">⬇</span>	-	-1.7 <span style="color:red">⬇</span>	-4.5 <span style="color:red">⬇</span>			
<b>Writing</b>									
% Expected standard+	-	34% <span style="color:red">⬇</span>	30% <span style="color:red">⬇</span>	-	-18% <span style="color:red">⬇</span>	-24% <span style="color:red">⬇</span>			
% Higher standard	-	0% <span style="color:red">⬇</span>	0% <span style="color:red">⬇</span>	-	-9% <span style="color:red">⬇</span>	-6%			
Scaled Score	-	92 <span style="color:red">⬇</span>	93 <span style="color:red">⬇</span>	-	-3.9 <span style="color:red">⬇</span>	-3.0 <span style="color:red">⬇</span>			
<b>Maths</b>									
% Expected standard+	-	50% <span style="color:red">⬇</span>	34% <span style="color:red">⬇</span>	-	-7%	-24% <span style="color:red">⬇</span>			
% Higher standard	-	5% <span style="color:red">⬇</span>	4% <span style="color:red">⬇</span>	-	-11% <span style="color:red">⬇</span>	-10% <span style="color:red">⬇</span>			
Scaled Score	-	98 <span style="color:red">⬇</span>	97 <span style="color:red">⬇</span>	-	-1.7 <span style="color:red">⬇</span>	-3.9 <span style="color:red">⬇</span>			
<b>Grammar, Punctuation &amp; Spelling</b>									
% Expected standard+	-	43% <span style="color:red">⬇</span>	30% <span style="color:red">⬇</span>	-	-13%	-25% <span style="color:red">⬇</span>			
% Higher standard	-	11% <span style="color:red">⬇</span>	4% <span style="color:red">⬇</span>	-	-9%	-14% <span style="color:red">⬇</span>			
Scaled Score	-	98 <span style="color:red">⬇</span>	97 <span style="color:red">⬇</span>	-	-2.1 <span style="color:red">⬇</span>	-3.8 <span style="color:red">⬇</span>			
<b>Science</b>									
% Expected standard+	-	57% <span style="color:red">⬇</span>	52% <span style="color:red">⬇</span>	-	-	-			

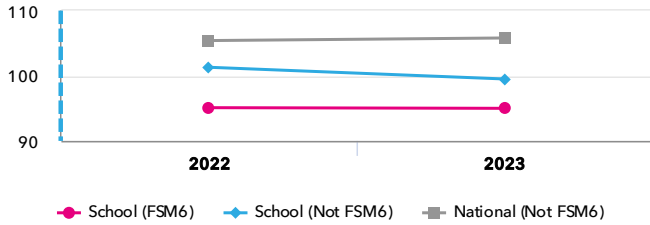
### Census information

KS2's latest academic year uses the context data provided in the school's MIS

# Disadvantaged pupils

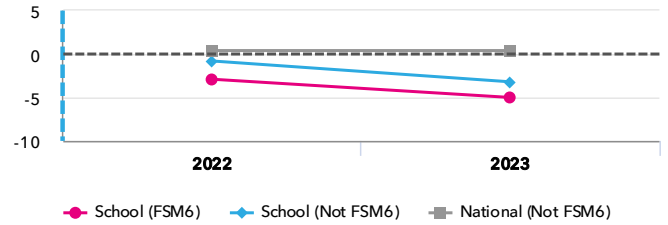
## KS2 attainment for disadvantaged pupils 2023

Average Scaled Score (Re, Ma)

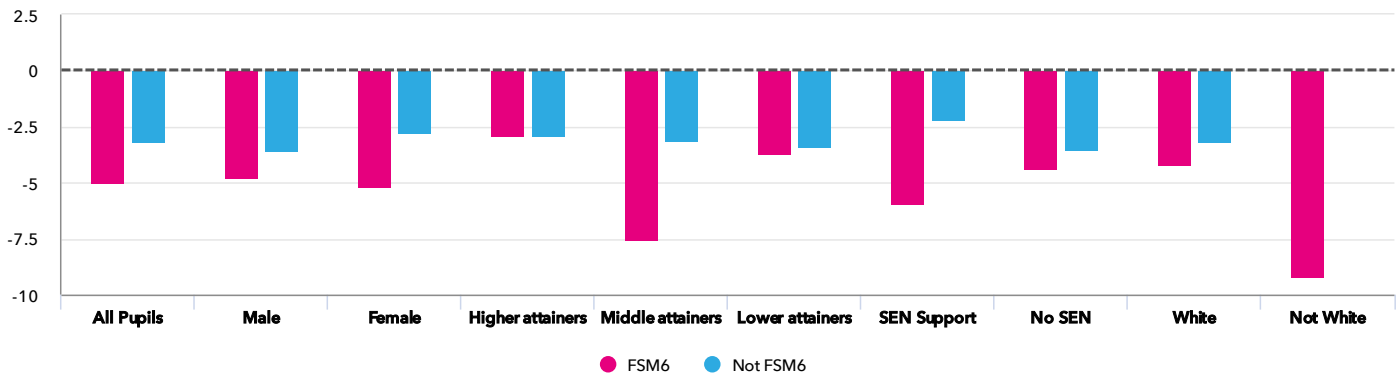


## KS2 progress for disadvantaged pupils 2023

Average Scaled Score (Re, Ma)



## Progress gap Average Scaled Score (Re, Ma)



## Attainment & progress

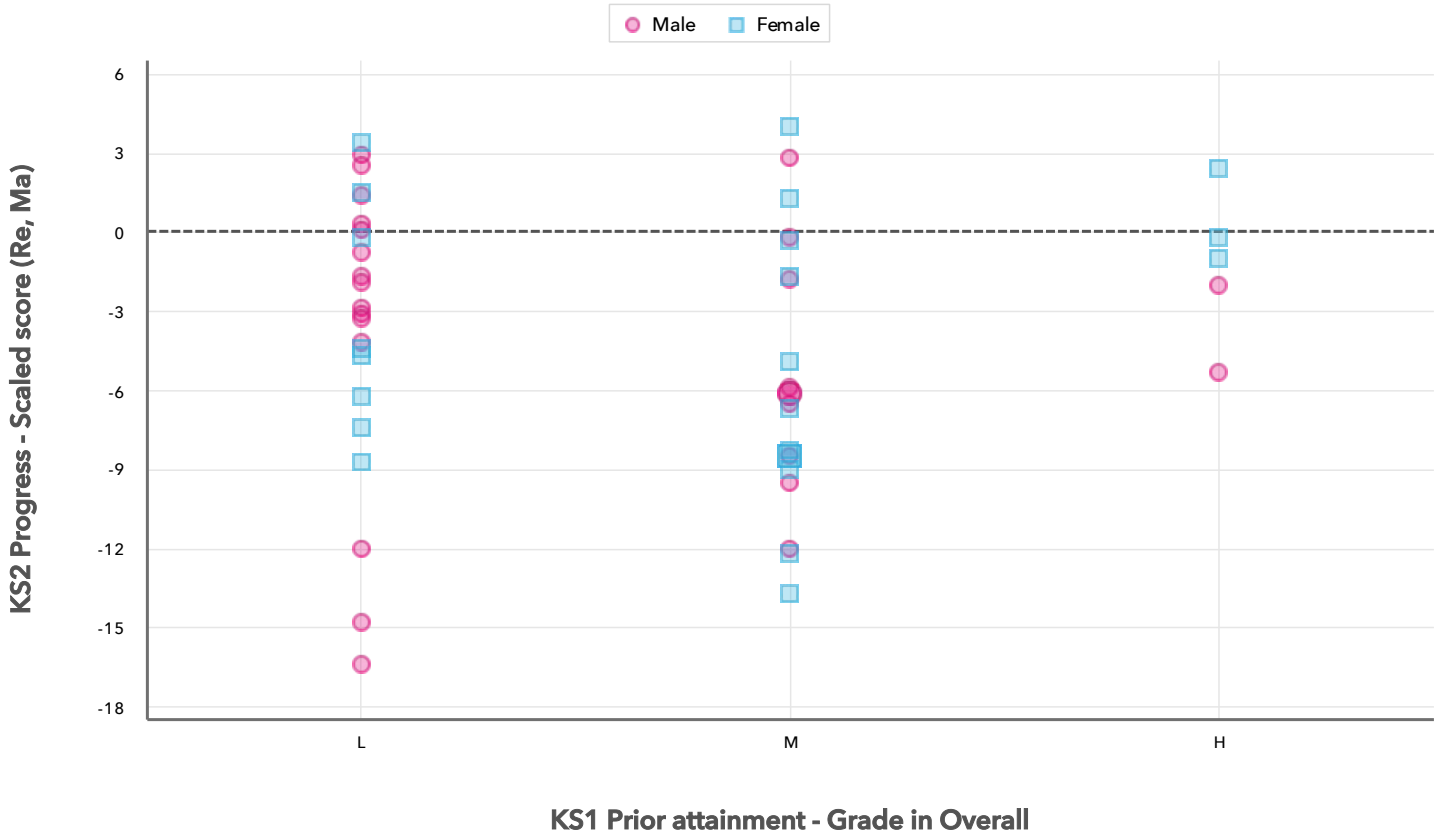
Pupils	Attainment			Progress					
	Average Scaled Score (Re, Ma)			Average Scaled Score (Re, Ma)					
	FSM6	Not FSM6	Gap	FSM6	Not FSM6	Gap			
<b>Summary</b>	All Pupils	28	22	95	99.5	-4.5	-5	-3.2	-1.8
<b>Gender</b>	Male	16	11	94.3	99.7	-5.4	-4.8	-3.6	-1.2
	Female	12	11	95.9	99.5	-3.6	-5.2	-2.8	-2.4
<b>DFE Prior Attainment</b>	Higher attainers	4	4	106.6	108.3	-1.7	-2.9	-2.9	0
	Middle attainers	10	8	96.1	101.2	-5.1	-7.5	-3.1	-4.4
	Lower attainers	14	10	90.3	94.2	-3.9	-3.7	-3.4	-0.3
<b>SEN Group</b>	SEN Support	10	5	92.6	103.9	-11.3	-5.9	-2.2	-3.7
	No SEN	18	17	96.3	98.5	-2.2	-4.4	-3.5	-0.9
<b>Ethnic Group</b>	White	24	22	95.4	99.5	-4.1	-4.2	-3.2	-1
	Not White	4	-	93.3	-	-	-9.2	-	-

### Census information

KS2's latest academic year uses the context data provided in the school's MIS

# Scatterplot

KS2 Pupil scatterplot 2023 50 pupils highlighted by Gender



**Census information**

KS2's latest academic year uses the context data provided in the school's MIS

## Context

## Context · Year 6

		Pupils		Comparative profile 2022 / 2023		Absence during Key Stage 2		Persistent absence during Key Stage 2	
		School	School	National	School	National	School	National	
<b>Summary</b>	All Pupils	50	100%	100%	-	-	-	-	
<b>Gender</b>	Male	27	54%	50%	-	-	-	-	
	Female	23	46%	50%	-	-	-	-	
<b>DFE Prior Attainment</b>	Higher attainers	8	16%	29%	-	-	-	-	
	Middle attainers	18	36%	45%	-	-	-	-	
	Lower attainers	24	48%	20%	-	-	-	-	
<b>Pupil Premium</b>	FSM (in last 6 years)	28	56%	29%	-	-	-	-	
	Not FSM (in last 6 years)	22	44%	69%	-	-	-	-	
<b>FSM</b>	FSM	28	56%	28%	-	-	-	-	
	Not FSM	22	44%	72%	-	-	-	-	
<b>Term of Birth</b>	Autumn Term	21	42%	34%	-	-	-	-	
	Spring Term	12	24%	33%	-	-	-	-	
	Summer Term	17	34%	34%	-	-	-	-	
<b>SEN Group</b>	SEN Support	15	30%	16%	-	-	-	-	
	No SEN	35	70%	81%	-	-	-	-	
<b>EAL</b>	First language not English	18	36%	24%	-	-	-	-	
	First language English	32	64%	75%	-	-	-	-	
<b>Mobility</b>	Joined in Y5 or Y6	4	8%	8%	-	-	-	-	
	Joined before Y5	46	92%	92%	-	-	-	-	
<b>Ethnicity</b>	White	46	92%	69%	-	-	-	-	
	Black Caribbean	2	4%	3%	-	-	-	-	
	Black African	1	2%	6%	-	-	-	-	
	Unknown	1	2%	1%	-	-	-	-	

## Census information

KS2's latest academic year uses the context data provided in the school's MIS

# Your evaluation – Summary analysis

2023

Key Stage 2

Use this page to assess your performance, evaluate your interventions and summarise key actions for next year. Keep your evaluation clear and focused. Key actions should include timescales and owners.

## Strengths

## Areas for improvement

## Key actions to improve performance

## Reading analysis

### Reports included in this section

Attainment & progress

Pupil groups

Disadvantaged pupils

Scatterplot

**Confidential:** Contains personal information



#### Key indicators

Scaled Score Reading

% Expected standard+ Reading

% Higher standard Reading

VA

#### Value added

Achievement is compared with similar pupils nationally. The FFT VA model uses prior attainment, gender and month of birth as a starting point.

# Attainment & progress

## KS2 Attainment 2023

50 pupils

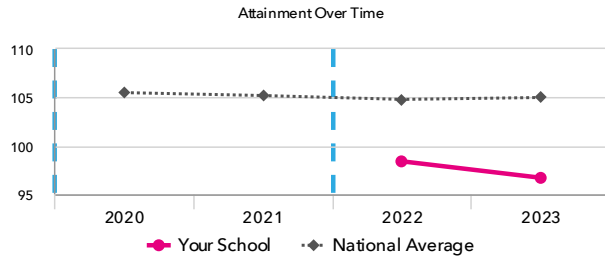
Scaled Score Reading DFE

96.7 pts ⬇️

FFT Rank



Significantly below the national average (105.0)



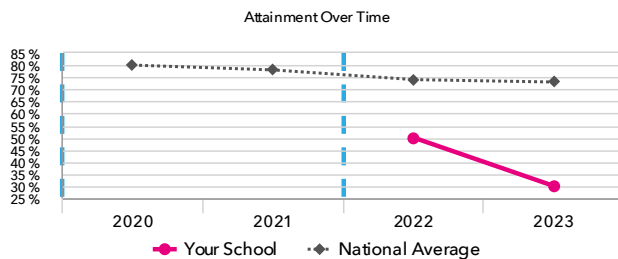
% Expected standard+ Reading DFE

30% ⬇️

FFT Rank



Significantly below the national average (73%)



## KS2 Progress 2023

50 matched pupils

Scaled Score Reading DFE

-4.5 pts ⬇️

FFT Rank



Significantly below the national average (0)

% Expected standard+ Reading

-29% ⬇️

FFT Rank



Significantly below the national average (0%)

## KS2 performance summary

	Actual results			Pupil progress		
	2021	2022	2023	2021	2022	2023
Number of Pupils / % Matched	-	56	50	-	98%	100%
% Expected standard+ (Re, Wr, Ma)	-	26% <span>⬇️</span>	22% <span>⬇️</span>	-	-17% <span>⬇️</span>	-21% <span>⬇️</span>
% Higher standard (Re, Wr, Ma)	-	0% <span>⬇️</span>	0% <span>⬇️</span>	-	-5% <span>⬇️</span>	-4% <span>⬇️</span>
Average Scaled Score (Re, GPS, Ma)	-	97.9 <span>⬇️</span>	97.1 <span>⬇️</span>	-	-1.9 <span>⬇️</span>	-4.0 <span>⬇️</span>
Average Scaled Score (Re, Ma)	-	98.1 <span>⬇️</span>	97.1 <span>⬇️</span>	-	-1.9 <span>⬇️</span>	-4.2 <span>⬇️</span>
% Expected standard+ Reading	-	50% <span>⬇️</span>	30% <span>⬇️</span>	-	-10% <span>⬇️</span>	-29% <span>⬇️</span>
% Higher standard Reading	-	7% <span>⬇️</span>	10% <span>⬇️</span>	-	-14% <span>⬇️</span>	-8% <span>⬇️</span>
Scaled Score Reading	-	98.4 <span>⬇️</span>	96.7 <span>⬇️</span>	-	-1.7 <span>⬇️</span>	-4.5 <span>⬇️</span>
% Expected standard+ Writing	-	34% <span>⬇️</span>	30% <span>⬇️</span>	-	-18% <span>⬇️</span>	-24% <span>⬇️</span>
% Higher standard Writing	-	0% <span>⬇️</span>	0% <span>⬇️</span>	-	-9% <span>⬇️</span>	-6% <span>⬇️</span>
Scaled Score Writing	-	91.9 <span>⬇️</span>	92.9 <span>⬇️</span>	-	-3.9 <span>⬇️</span>	-3.0 <span>⬇️</span>
% Expected standard+ Maths	-	50% <span>⬇️</span>	34% <span>⬇️</span>	-	-7% <span>⬇️</span>	-24% <span>⬇️</span>
% Higher standard Maths	-	5% <span>⬇️</span>	4% <span>⬇️</span>	-	-11% <span>⬇️</span>	-10% <span>⬇️</span>
Scaled Score Maths	-	97.8 <span>⬇️</span>	97.1 <span>⬇️</span>	-	-1.7 <span>⬇️</span>	-3.9 <span>⬇️</span>
% Expected standard+ Grammar, Punctuation & Spelling	-	43% <span>⬇️</span>	30% <span>⬇️</span>	-	-13% <span>⬇️</span>	-25% <span>⬇️</span>
% Higher standard Grammar, Punctuation & Spelling	-	11% <span>⬇️</span>	4% <span>⬇️</span>	-	-9% <span>⬇️</span>	-14% <span>⬇️</span>
Scaled Score Grammar, Punctuation & Spelling	-	97.8 <span>⬇️</span>	96.8 <span>⬇️</span>	-	-2.1 <span>⬇️</span>	-3.8 <span>⬇️</span>
% Expected standard+ Science	-	57% <span>⬇️</span>	52% <span>⬇️</span>	-	-	-

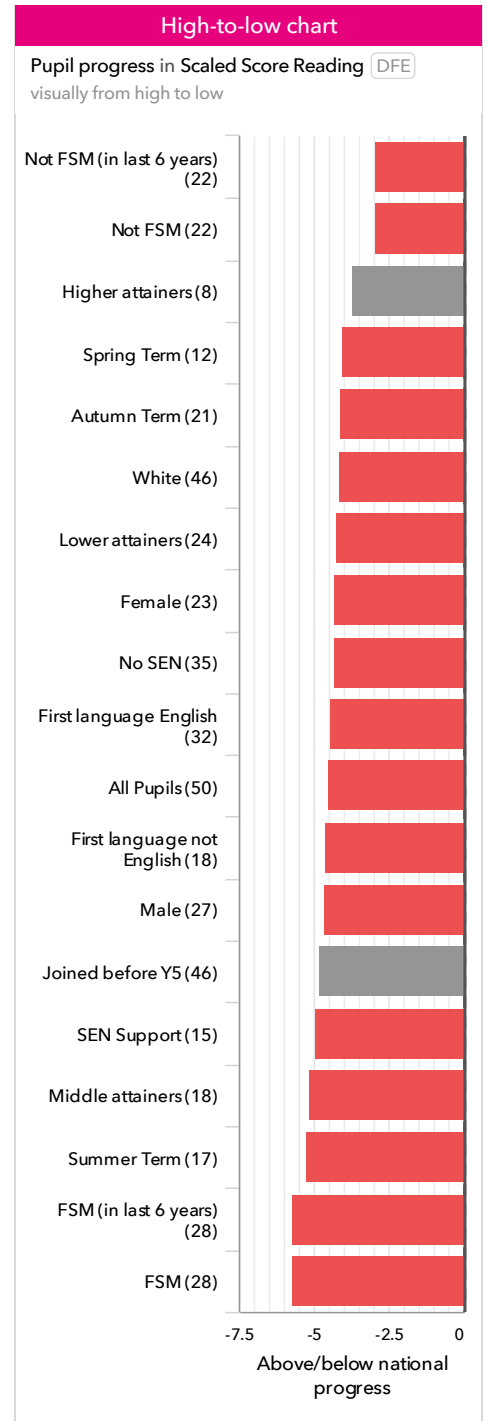
### Census information

KS2's latest academic year uses the context data provided in the school's MIS

# Pupil groups

## KS2 Pupil groups performance 2023

	Pupils	Actual results			Pupil progress			
		Scaled Score Reading DFE	% Expected standard+ Reading DFE	% Higher standard Reading DFE	Scaled Score Reading DFE	% Expected standard+ Reading	% Higher standard Reading	
<b>Summary</b>	All Pupils	50	96.7	30%	10%	-4.5	-29%	-8%
<b>Gender</b>	Male	27	95.2	22%	4%	-4.7	-29%	-11%
	Female	23	98.3	39%	17%	-4.3	-28%	-6%
<b>DFE Prior Attainment</b>	Higher attainers	8	107.1	100%	38%	-3.7	+3%	-24%
	Middle attainers	18	99.3	39%	11%	-5.1	-42%	-9%
	Lower attainers	24	90.7	0%	0%	-4.3	-29%	-3%
<b>Pupil Premium</b>	FSM (in last 6 years)	28	94.8	18%	4%	-5.7	-36%	-13%
	Not FSM (in last 6 years)	22	99.0	45%	18%	-2.9	-19%	-3%
<b>FSM</b>	FSM	28	94.8	18%	4%	-5.7	-36%	-13%
	Not FSM	22	99.0	45%	18%	-2.9	-19%	-3%
<b>Term of Birth</b>	Autumn Term	21	99.0	48%	14%	-4.1	-24%	-11%
	Spring Term	12	95.6	17%	8%	-4.0	-37%	-8%
	Summer Term	17	94.4	18%	6%	-5.3	-29%	-6%
<b>SEN Group</b>	SEN Support	15	94.8	20%	7%	-4.9	-30%	-8%
	No SEN	35	97.5	34%	11%	-4.3	-28%	-9%
<b>EAL</b>	First language not English	18	94.7	28%	6%	-4.6	-28%	-11%
	First language English	32	97.9	31%	13%	-4.4	-29%	-7%
<b>Mobility</b>	Joined in Y5 or Y6	4	92.0	0%	0%	-0.8	-28%	-3%
	Joined before Y5	46	97.1	33%	11%	-4.8	-29%	-9%
<b>Ethnicity</b>	White	46	96.9	33%	11%	-4.1	-25%	-8%
	Black Caribbean	2	94.5	0%	0%	-7.9	-69%	-13%
	Black African	1	97.0	0%	0%	-8.0	-82%	-22%
	Unknown	1	93.0	0%	0%	-10.3	-77%	-15%

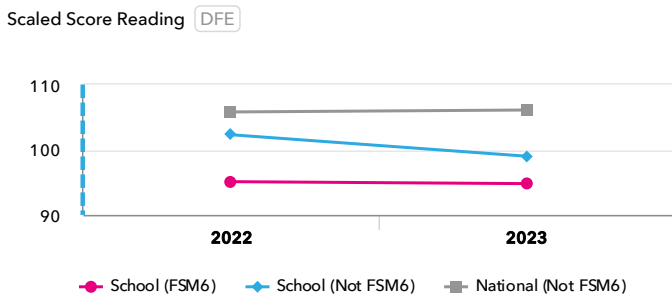


### Census information

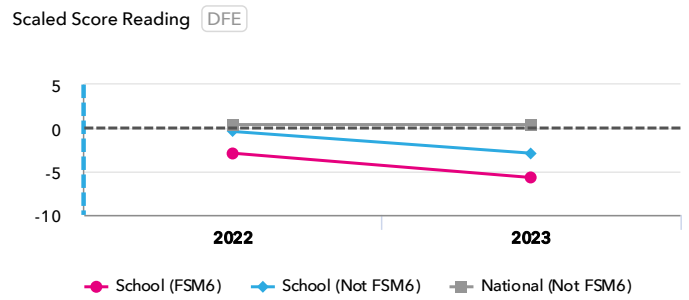
KS2's latest academic year uses the context data provided in the school's MIS

# Disadvantaged pupils

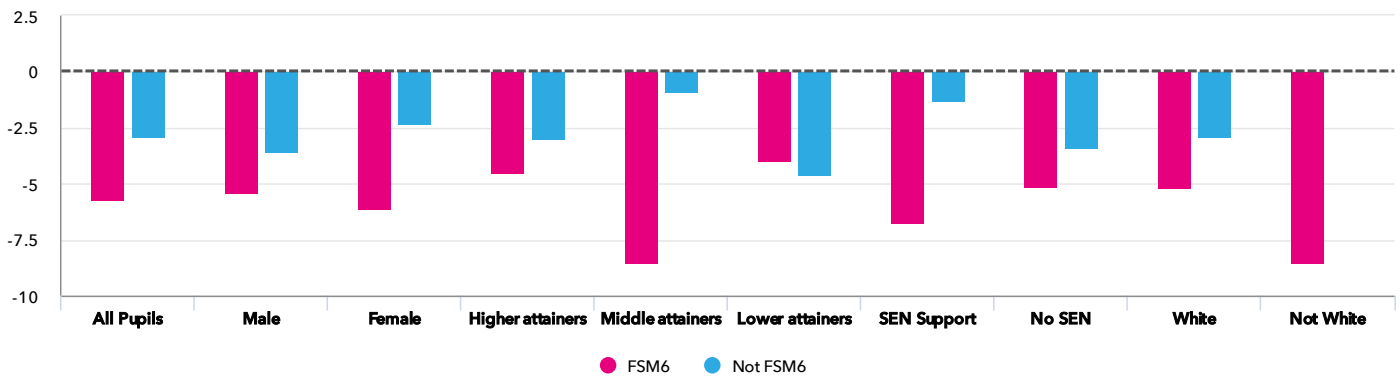
## KS2 attainment for disadvantaged pupils 2023



## KS2 progress for disadvantaged pupils 2023



## Progress gap Scaled Score Reading (DFE)



## Attainment & progress

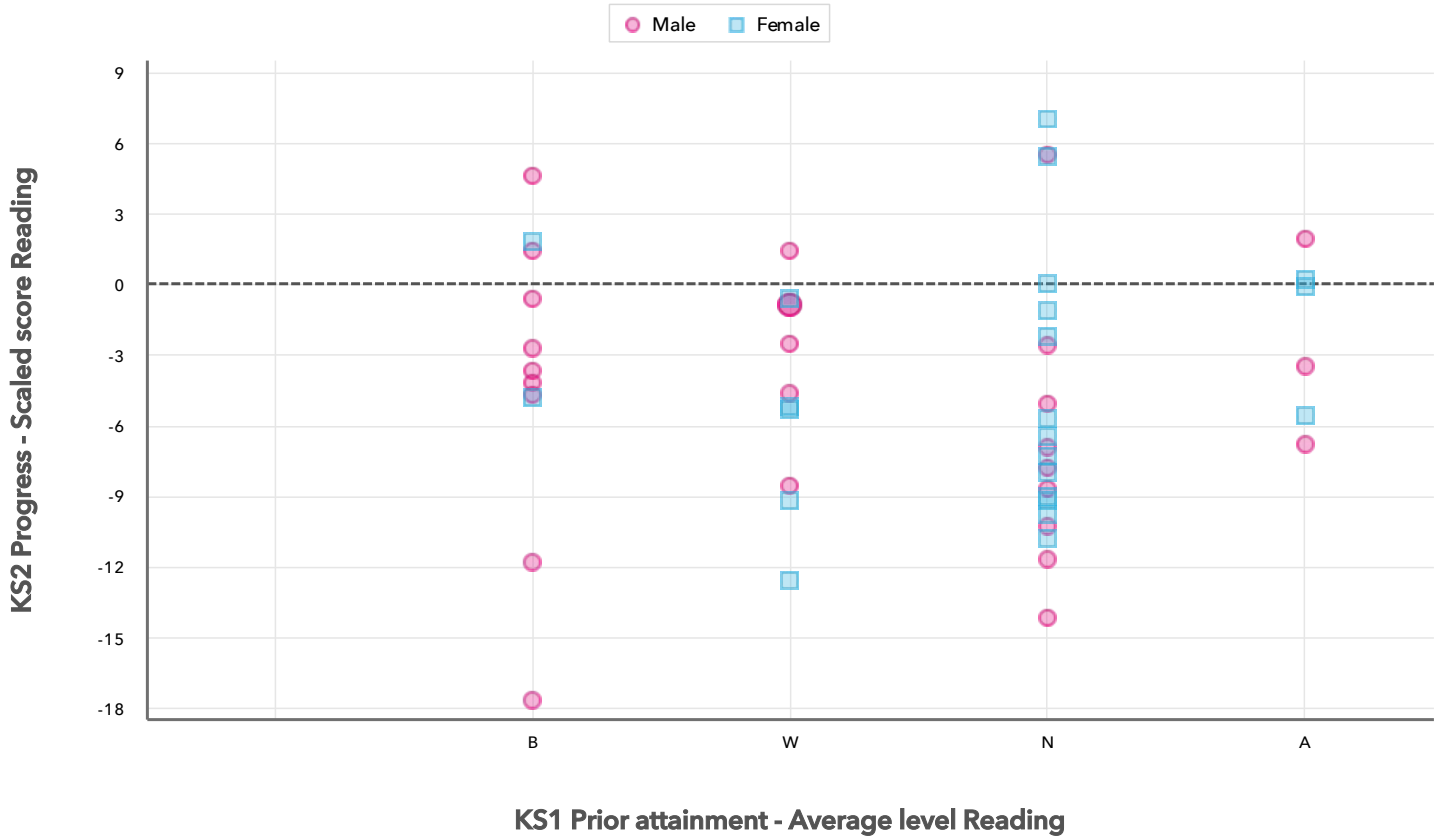
Pupils	Attainment			Progress					
	Scaled Score Reading (DFE)			Scaled Score Reading (DFE)					
	FSM6	Not FSM6	Gap	FSM6	Not FSM6	Gap			
<b>Summary</b>	All Pupils	28	22	94.8	99	-4.2	-5.7	-2.9	-2.8
<b>Gender</b>	Male	16	11	93.7	97	-3.3	-5.4	-3.6	-1.8
	Female	12	11	96	100.9	-4.9	-6.1	-2.3	-3.8
<b>DFE Prior Attainment</b>	Higher attainers	4	4	106.3	108	-1.7	-4.5	-3	-1.5
	Middle attainers	10	8	95.6	104	-8.4	-8.5	-0.9	-7.6
	Lower attainers	14	10	90.3	91.3	-1	-4	-4.6	0.6
<b>SEN Group</b>	SEN Support	10	5	92.2	99.4	-7.2	-6.7	-1.3	-5.4
	No SEN	18	17	96.1	98.8	-2.7	-5.1	-3.4	-1.7
<b>Ethnic Group</b>	White	24	22	94.8	99	-4.2	-5.2	-2.9	-2.3
	Not White	4	-	94.8	-	-	-8.5	-	-

### Census information

KS2's latest academic year uses the context data provided in the school's MIS

# Scatterplot

KS2 Pupil scatterplot 2023 50 pupils highlighted by Gender



**Census information**

KS2's latest academic year uses the context data provided in the school's MIS

# Your evaluation – Reading analysis

2023

Key Stage 2

Use this page to assess your performance, evaluate your interventions and summarise key actions for next year. Keep your evaluation clear and focused. Key actions should include timescales and owners.

## Strengths

## Areas for improvement

## Key actions to improve performance

## Maths analysis

### Reports included in this section

Attainment & progress

Pupil groups

Disadvantaged pupils

Scatterplot

**Confidential:** Contains personal information



#### Key indicators

Scaled Score Maths

% Expected standard+ Maths

% Higher standard Maths

VA

#### Value added

Achievement is compared with similar pupils nationally. The FFT VA model uses prior attainment, gender and month of birth as a starting point.

# Attainment & progress

## KS2 Attainment 2023

50 pupils

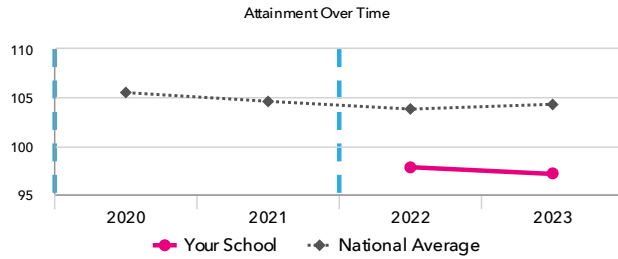
Scaled Score Maths DFE

97.1 pts ⬇️

FFT Rank



Significantly below the national average (104.3)



## KS2 Progress 2023

50 matched pupils

Scaled Score Maths DFE

-3.9 pts ⬇️

FFT Rank



Significantly below the national average (0)

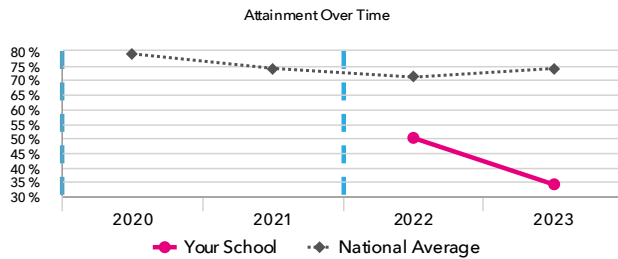
% Expected standard+ Maths DFE

34% ⬇️

FFT Rank



Significantly below the national average (74%)



% Expected standard+ Maths

-24% ⬇️

FFT Rank



Significantly below the national average (0%)

## KS2 performance summary

	Actual results			Pupil progress		
	2021	2022	2023	2021	2022	2023
Number of Pupils / % Matched	-	56	50	-	98%	100%
% Expected standard+ (Re, Wr, Ma)	-	26% <span>⬇️</span>	22% <span>⬇️</span>	-	-17% <span>⬇️</span>	-21% <span>⬇️</span>
% Higher standard (Re, Wr, Ma)	-	0% <span>⬇️</span>	0% <span>⬇️</span>	-	-5% <span>⬇️</span>	-4% <span>⬇️</span>
Average Scaled Score (Re, GPS, Ma)	-	97.9 <span>⬇️</span>	97.1 <span>⬇️</span>	-	-1.9 <span>⬇️</span>	-4.0 <span>⬇️</span> <span>⬇️</span>
Average Scaled Score (Re, Ma)	-	98.1 <span>⬇️</span>	97.1 <span>⬇️</span>	-	-1.9 <span>⬇️</span>	-4.2 <span>⬇️</span> <span>⬇️</span>
% Expected standard+ Reading	-	50% <span>⬇️</span>	30% <span>⬇️</span> <span>⬇️</span>	-	-10% <span>⬇️</span>	-29% <span>⬇️</span>
% Higher standard Reading	-	7% <span>⬇️</span>	10% <span>⬇️</span>	-	-14% <span>⬇️</span>	-8% <span>⬇️</span>
Scaled Score Reading	-	98.4 <span>⬇️</span>	96.7 <span>⬇️</span>	-	-1.7 <span>⬇️</span>	-4.5 <span>⬇️</span> <span>⬇️</span>
% Expected standard+ Writing	-	34% <span>⬇️</span>	30% <span>⬇️</span>	-	-18% <span>⬇️</span>	-24% <span>⬇️</span>
% Higher standard Writing	-	0% <span>⬇️</span>	0% <span>⬇️</span>	-	-9% <span>⬇️</span>	-6% <span>⬇️</span>
Scaled Score Writing	-	91.9 <span>⬇️</span>	92.9 <span>⬇️</span>	-	-3.9 <span>⬇️</span>	-3.0 <span>⬇️</span>
% Expected standard+ Maths	-	50% <span>⬇️</span>	34% <span>⬇️</span>	-	-7% <span>⬇️</span>	-24% <span>⬇️</span>
% Higher standard Maths	-	5% <span>⬇️</span>	4% <span>⬇️</span>	-	-11% <span>⬇️</span>	-10% <span>⬇️</span>
Scaled Score Maths	-	97.8 <span>⬇️</span>	97.1 <span>⬇️</span>	-	-1.7 <span>⬇️</span>	-3.9 <span>⬇️</span>
% Expected standard+ Grammar, Punctuation & Spelling	-	43% <span>⬇️</span>	30% <span>⬇️</span>	-	-13% <span>⬇️</span>	-25% <span>⬇️</span>
% Higher standard Grammar, Punctuation & Spelling	-	11% <span>⬇️</span>	4% <span>⬇️</span>	-	-9% <span>⬇️</span>	-14% <span>⬇️</span>
Scaled Score Grammar, Punctuation & Spelling	-	97.8 <span>⬇️</span>	96.8 <span>⬇️</span>	-	-2.1 <span>⬇️</span>	-3.8 <span>⬇️</span>
% Expected standard+ Science	-	57% <span>⬇️</span>	52% <span>⬇️</span>	-	-	-

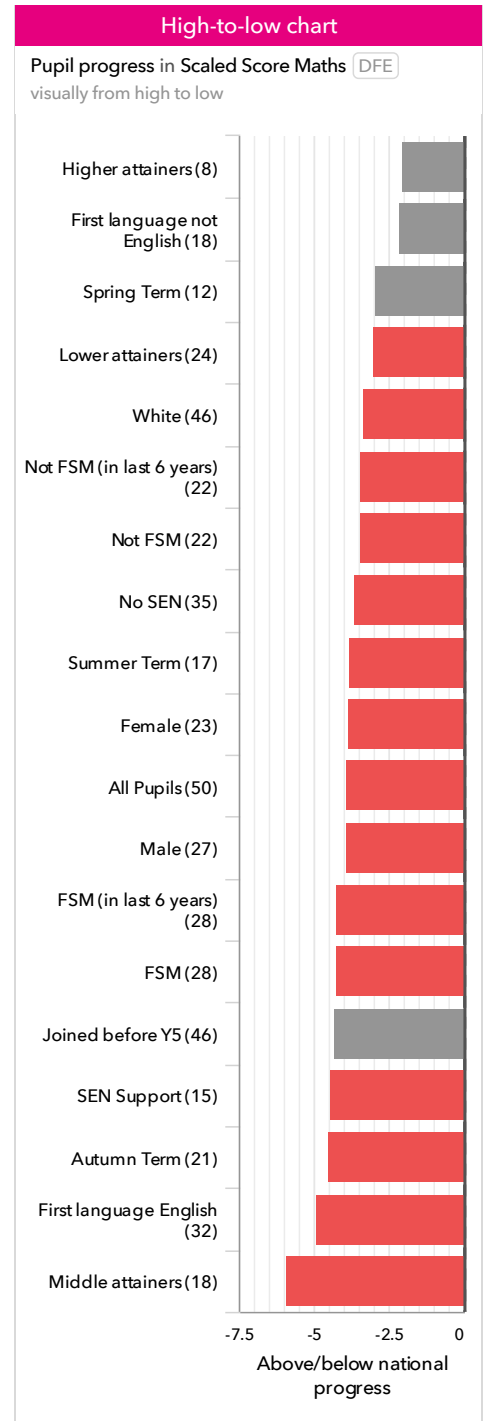
### Census information

KS2's latest academic year uses the context data provided in the school's MIS

# Pupil groups

## KS2 Pupil groups performance 2023

		Actual results			Pupil progress			
	Pupils	Scaled Score Maths DFE	% Expected standard+ Maths DFE	% Higher standard Maths DFE	Scaled Score Maths DFE	% Expected standard+ Maths	% Higher standard Maths	
<b>Summary</b>	All Pupils	50	97.1 <span>⬇️</span>	34% <span>⬇️</span>	4% <span>⬇️</span>	-3.9 <span>⬇️</span>	-24% <span>⬇️</span>	-10% <span>⬇️</span>
<b>Gender</b>	Male	27	97.4 <span>⬇️</span>	37% <span>⬇️</span>	0% <span>⬇️</span>	-3.9 <span>⬇️</span> <span>⬇️</span>	-17%	-14% <span>⬇️</span>
	Female	23	96.9 <span>⬇️</span>	30% <span>⬇️</span>	9%	-3.9 <span>⬇️</span>	-32% <span>⬇️</span>	-6%
<b>DFE Prior Attainment</b>	Higher attainers	8	107.8	88%	25%	-2.0	-10%	-29%
	Middle attainers	18	97.4 <span>⬇️</span>	33% <span>⬇️</span>	0%	-5.9 <span>⬇️</span>	-46% <span>⬇️</span>	-12%
	Lower attainers	24	92.9	17%	0%	-3.0 <span>⬇️</span> <span>⬇️</span>	-12%	-2%
<b>Pupil Premium</b>	FSM (in last 6 years)	28	95.3 <span>⬇️</span>	18% <span>⬇️</span>	4%	-4.2 <span>⬇️</span>	-35% <span>⬇️</span>	-7%
	Not FSM (in last 6 years)	22	99.4 <span>⬇️</span>	55% <span>⬇️</span>	5% <span>⬇️</span>	-3.5 <span>⬇️</span>	-10%	-14%
<b>FSM</b>	FSM	28	95.3 <span>⬇️</span>	18% <span>⬇️</span>	4%	-4.2 <span>⬇️</span>	-35% <span>⬇️</span>	-7%
	Not FSM	22	99.4 <span>⬇️</span>	55% <span>⬇️</span>	5% <span>⬇️</span>	-3.5 <span>⬇️</span>	-10%	-14%
<b>Term of Birth</b>	Autumn Term	21	99.1 <span>⬇️</span>	43% <span>⬇️</span>	10%	-4.5 <span>⬇️</span>	-28% <span>⬇️</span>	-10%
	Spring Term	12	95.8 <span>⬇️</span>	17% <span>⬇️</span>	0%	-2.9	-36% <span>⬇️</span>	-12%
	Summer Term	17	95.6 <span>⬇️</span>	35% <span>⬇️</span>	0% <span>⬇️</span>	-3.8 <span>⬇️</span>	-10%	-10%
<b>SEN Group</b>	SEN Support	15	96.5	33%	7%	-4.4 <span>⬇️</span>	-16%	-4%
	No SEN	35	97.4 <span>⬇️</span>	34% <span>⬇️</span> <span>⬇️</span>	3% <span>⬇️</span>	-3.7 <span>⬇️</span>	-27% <span>⬇️</span> <span>⬇️</span>	-13% <span>⬇️</span>
<b>EAL</b>	First language not English	18	96.3 <span>⬇️</span> <span>⬇️</span>	28% <span>⬇️</span> <span>⬇️</span>	0% <span>⬇️</span>	-2.1	-26% <span>⬇️</span>	-11%
	First language English	32	97.7 <span>⬇️</span>	38% <span>⬇️</span>	6% <span>⬇️</span>	-4.9 <span>⬇️</span>	-23% <span>⬇️</span>	-9%
<b>Mobility</b>	Joined in Y5 or Y6	4	94.3	25%	0%	+0.7	-7%	-4%
	Joined before Y5	46	97.4	35%	4%	-4.3	-25%	-11%
<b>Ethnicity</b>	White	46	97.6 <span>⬇️</span>	37% <span>⬇️</span>	4% <span>⬇️</span>	-3.4 <span>⬇️</span>	-20% <span>⬇️</span>	-10%
	Black Caribbean	2	90.0	0%	0%	-10.3	-62%	-5%
	Black African	1	98.0	0%	0%	-5.3	-79%	-11%
	Unknown	1	89.0	0%	0%	-13.8	-79%	-11%

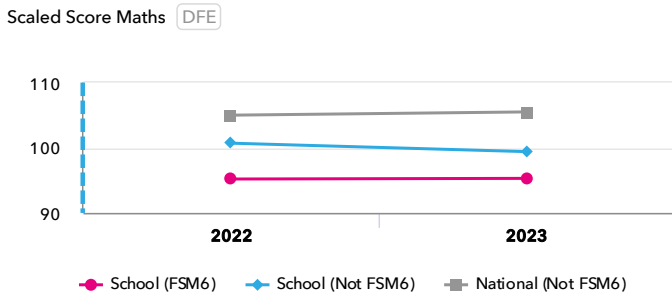


### Census information

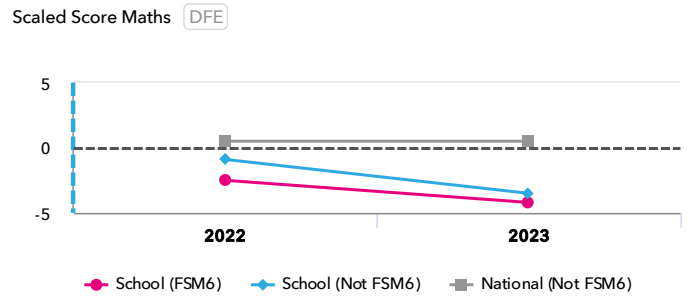
KS2's latest academic year uses the context data provided in the school's MIS

# Disadvantaged pupils

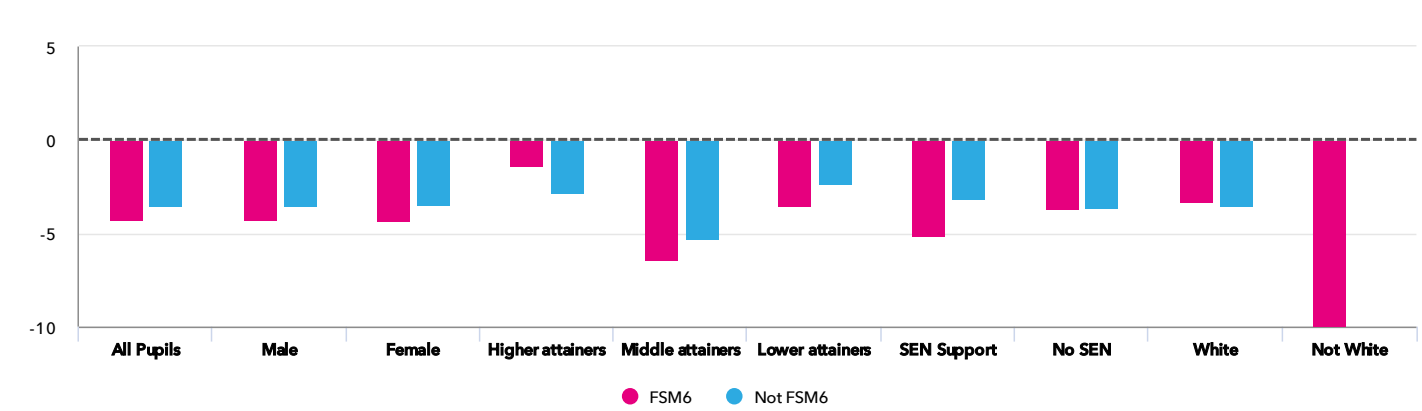
## KS2 attainment for disadvantaged pupils 2023



## KS2 progress for disadvantaged pupils 2023



## Progress gap



## Attainment & progress

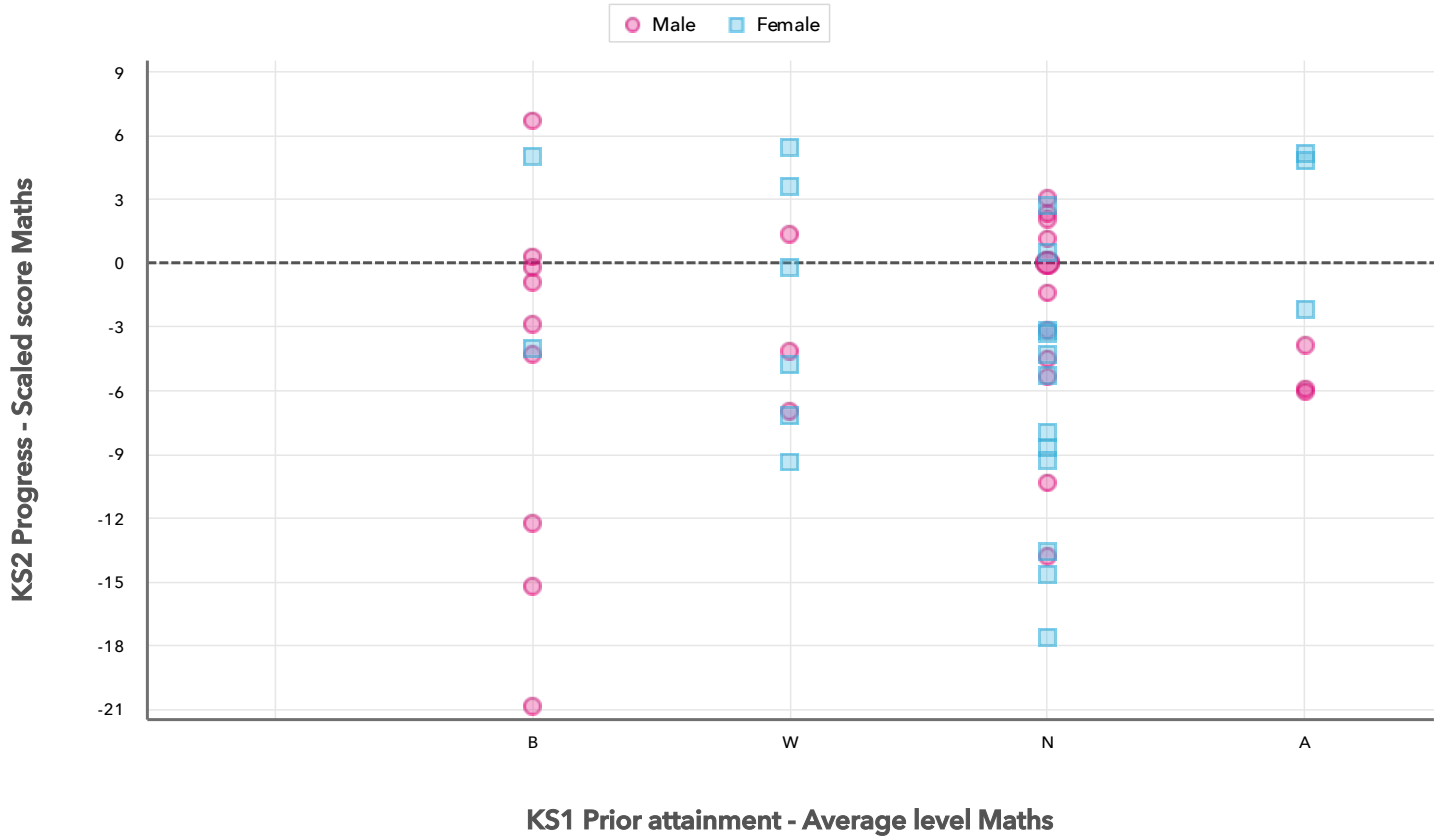
Pupils	Attainment			Progress					
	FSM6	Not FSM6	Scaled Score Maths (DFE)						
			FSM6	Not FSM6	Gap	FSM6	Not FSM6	Gap	
<b>Summary</b>	All Pupils	28	22	95.3	99.4	-4.1	-4.2	-3.5	-0.7
<b>Gender</b>	Male	16	11	94.9	100.9	-6	-4.2	-3.5	-0.7
	Female	12	11	95.8	98	-2.2	-4.3	-3.4	-0.9
<b>DFE Prior Attainment</b>	Higher attainers	4	4	107	108.5	-1.5	-1.3	-2.8	1.5
	Middle attainers	10	8	96.6	98.4	-1.8	-6.4	-5.3	-1.1
	Lower attainers	14	10	90.3	96.2	-5.9	-3.5	-2.3	-1.2
<b>SEN Group</b>	SEN Support	10	5	93	104.3	-11.3	-5.1	-3.1	-2
	No SEN	18	17	96.5	98.2	-1.7	-3.7	-3.6	-0.1
<b>Ethnic Group</b>	White	24	22	96	99.4	-3.4	-3.3	-3.5	0.2
	Not White	4	-	91.8	-	-	-9.9	-	-

### Census information

KS2's latest academic year uses the context data provided in the school's MIS

# Scatterplot

KS2 Pupil scatterplot 2023 50 pupils highlighted by Gender



**Census information**

KS2's latest academic year uses the context data provided in the school's MIS

# Your evaluation – Maths analysis

2023

Key Stage 2

Use this page to assess your performance, evaluate your interventions and summarise key actions for next year. Keep your evaluation clear and focused. Key actions should include timescales and owners.

## Strengths

## Areas for improvement

## Key actions to improve performance

## Writing analysis

### Reports included in this section

Attainment & progress

Pupil groups

Disadvantaged pupils

Scatterplot

**Confidential:** Contains personal information



#### Key indicators

Scaled Score Writing

% Expected standard+ Writing

% Higher standard Writing

VA

#### Value added

Achievement is compared with similar pupils nationally. The FFT VA model uses prior attainment, gender and month of birth as a starting point.

# Attainment & progress

## KS2 Attainment 2023

50 pupils

Scaled Score Writing (DFE)

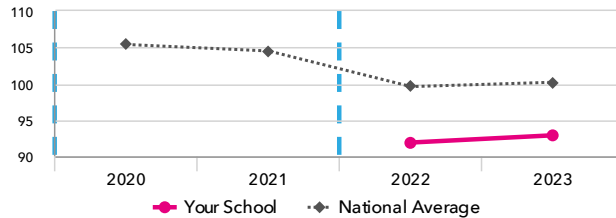
92.9

FFT Rank



Significantly below the national average (100.2)

Attainment Over Time



## KS2 Progress 2023

50 matched pupils

Scaled Score Writing (DFE)

-3.0

FFT Rank



Significantly below the national average (0)

% Expected standard+ Writing (DFE)

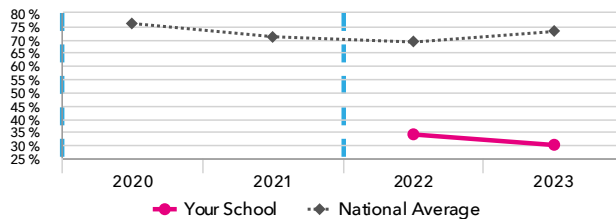
30%

FFT Rank



Significantly below the national average (73%)

Attainment Over Time



% Expected standard+ Writing

-24%

FFT Rank



Significantly below the national average (0%)

## KS2 performance summary

	Actual results			Pupil progress		
	2021	2022	2023	2021	2022	2023
Number of Pupils / % Matched	-	56	50	-	98%	100%
% Expected standard+ (Re, Wr, Ma)	-	26%	22%	-	-17%	-21%
% Higher standard (Re, Wr, Ma)	-	0%	0%	-	-5%	-4%
Average Scaled Score (Re, GPS, Ma)	-	97.9	97.1	-	-1.9	-4.0
Average Scaled Score (Re, Ma)	-	98.1	97.1	-	-1.9	-4.2
% Expected standard+ Reading	-	50%	30%	-	-10%	-29%
% Higher standard Reading	-	7%	10%	-	-14%	-8%
Scaled Score Reading	-	98.4	96.7	-	-1.7	-4.5
% Expected standard+ Writing	-	34%	30%	-	-18%	-24%
% Higher standard Writing	-	0%	0%	-	-9%	-6%
Scaled Score Writing	-	91.9	92.9	-	-3.9	-3.0
% Expected standard+ Maths	-	50%	34%	-	-7%	-24%
% Higher standard Maths	-	5%	4%	-	-11%	-10%
Scaled Score Maths	-	97.8	97.1	-	-1.7	-3.9
% Expected standard+ Grammar, Punctuation & Spelling	-	43%	30%	-	-13%	-25%
% Higher standard Grammar, Punctuation & Spelling	-	11%	4%	-	-9%	-14%
Scaled Score Grammar, Punctuation & Spelling	-	97.8	96.8	-	-2.1	-3.8
% Expected standard+ Science	-	57%	52%	-	-	-

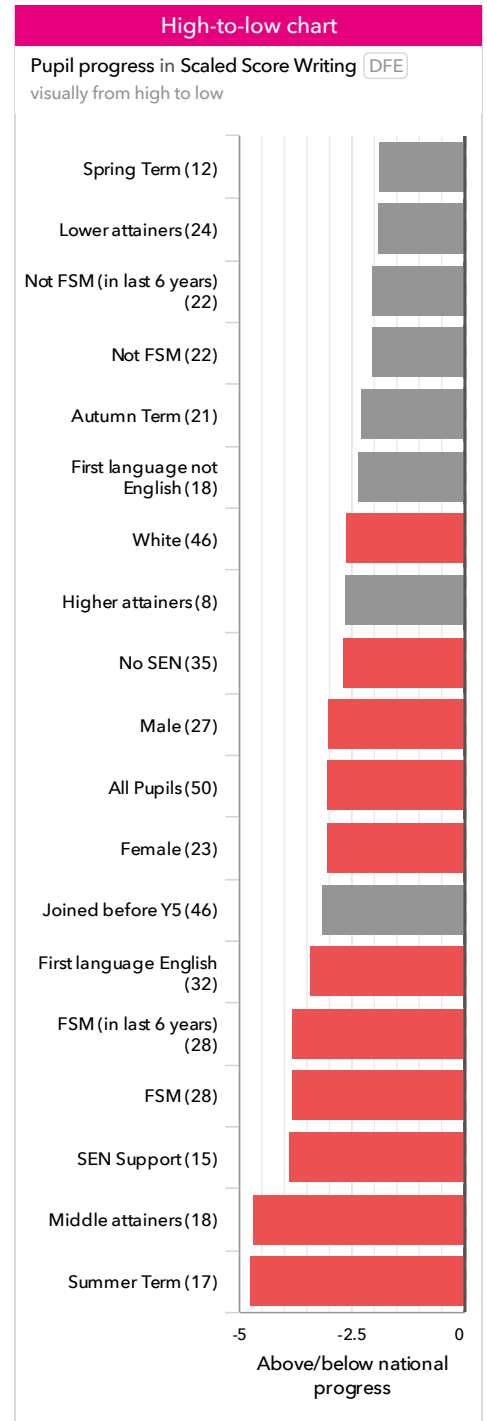
### Census information

KS2's latest academic year uses the context data provided in the school's MIS

# Pupil groups

## KS2 Pupil groups performance 2023

		Actual results			Pupil progress			
	Pupils	Scaled Score Writing DFE	% Expected standard+ Writing DFE	% Higher standard Writing DFE	Scaled Score Writing DFE	% Expected standard+ Writing	% Higher standard Writing	
<b>Summary</b>	All Pupils	50	92.9	30%	0%	-3.0	-24%	-6%
<b>Gender</b>	Male	27	90.1	19%	0%	-3.0	-22%	-3%
	Female	23	96.2	43%	0%	-3.0	-25%	-10%
<b>DFE Prior Attainment</b>	Higher attainers	8	103.0	100%	0%	-2.6	+3%	-30%
	Middle attainers	18	95.7	39%	0%	-4.7	-40%	-4%
	Lower attainers	24	87.5	0%	0%	-1.9	-21%	-0%
<b>Pupil Premium</b>	FSM (in last 6 years)	28	90.7	18%	0%	-3.8	-30%	-5%
	Not FSM (in last 6 years)	22	95.8	45%	0%	-2.0	-15%	-8%
<b>FSM</b>	FSM	28	90.7	18%	0%	-3.8	-30%	-5%
	Not FSM	22	95.8	45%	0%	-2.0	-15%	-8%
<b>Term of Birth</b>	Autumn Term	21	96.6	52%	0%	-2.3	-16%	-10%
	Spring Term	12	93.0	17%	0%	-1.9	-30%	-5%
	Summer Term	17	88.4	12%	0%	-4.7	-29%	-3%
<b>SEN Group</b>	SEN Support	15	89.6	20%	0%	-3.9	-21%	-5%
	No SEN	35	94.3	34%	0%	-2.6	-25%	-7%
<b>EAL</b>	First language not English	18	92.8	22%	0%	-2.3	-28%	-5%
	First language English	32	93.0	34%	0%	-3.4	-21%	-7%
<b>Mobility</b>	Joined in Y5 or Y6	4	87.3	0%	0%	-1.7	-18%	-0%
	Joined before Y5	46	93.4	33%	0%	-3.1	-24%	-7%
<b>Ethnicity</b>	White	46	93.1	33%	0%	-2.6	-20%	-7%
	Black Caribbean	2	91.0	0%	0%	-6.5	-61%	-1%
	Black African	1	91.0	0%	0%	-11.4	-89%	-7%
	Unknown	1	91.0	0%	0%	-6.4	-63%	-1%

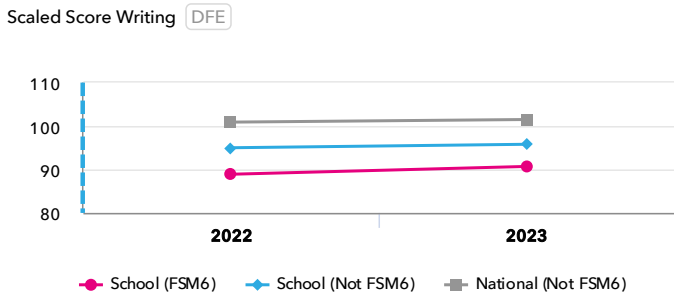


### Census information

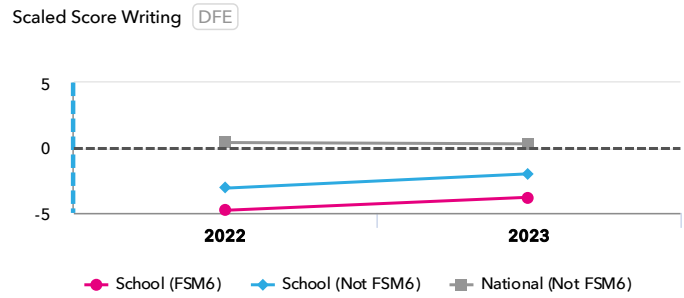
KS2's latest academic year uses the context data provided in the school's MIS

# Disadvantaged pupils

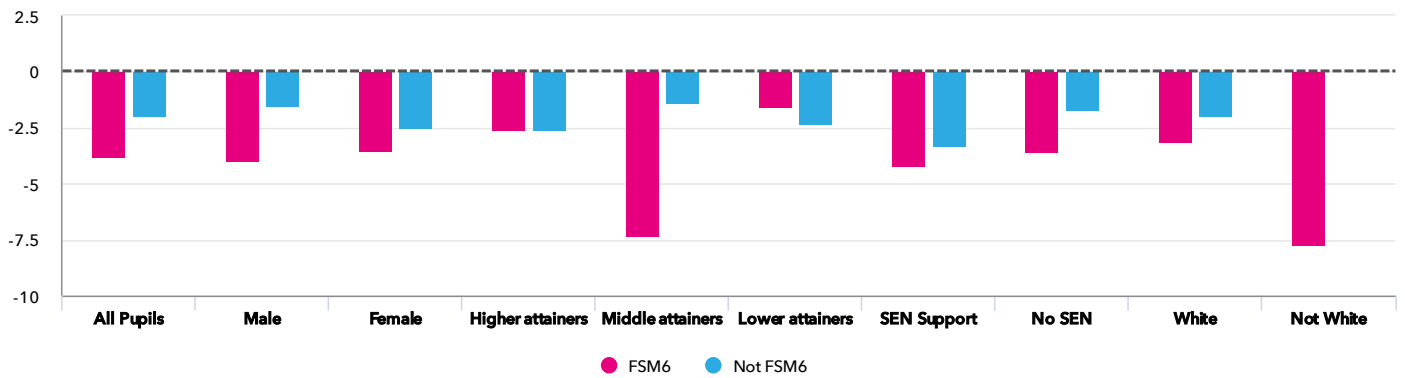
## KS2 attainment for disadvantaged pupils 2023



## KS2 progress for disadvantaged pupils 2023



## Progress gap Scaled Score Writing (DFE)



## Attainment & progress

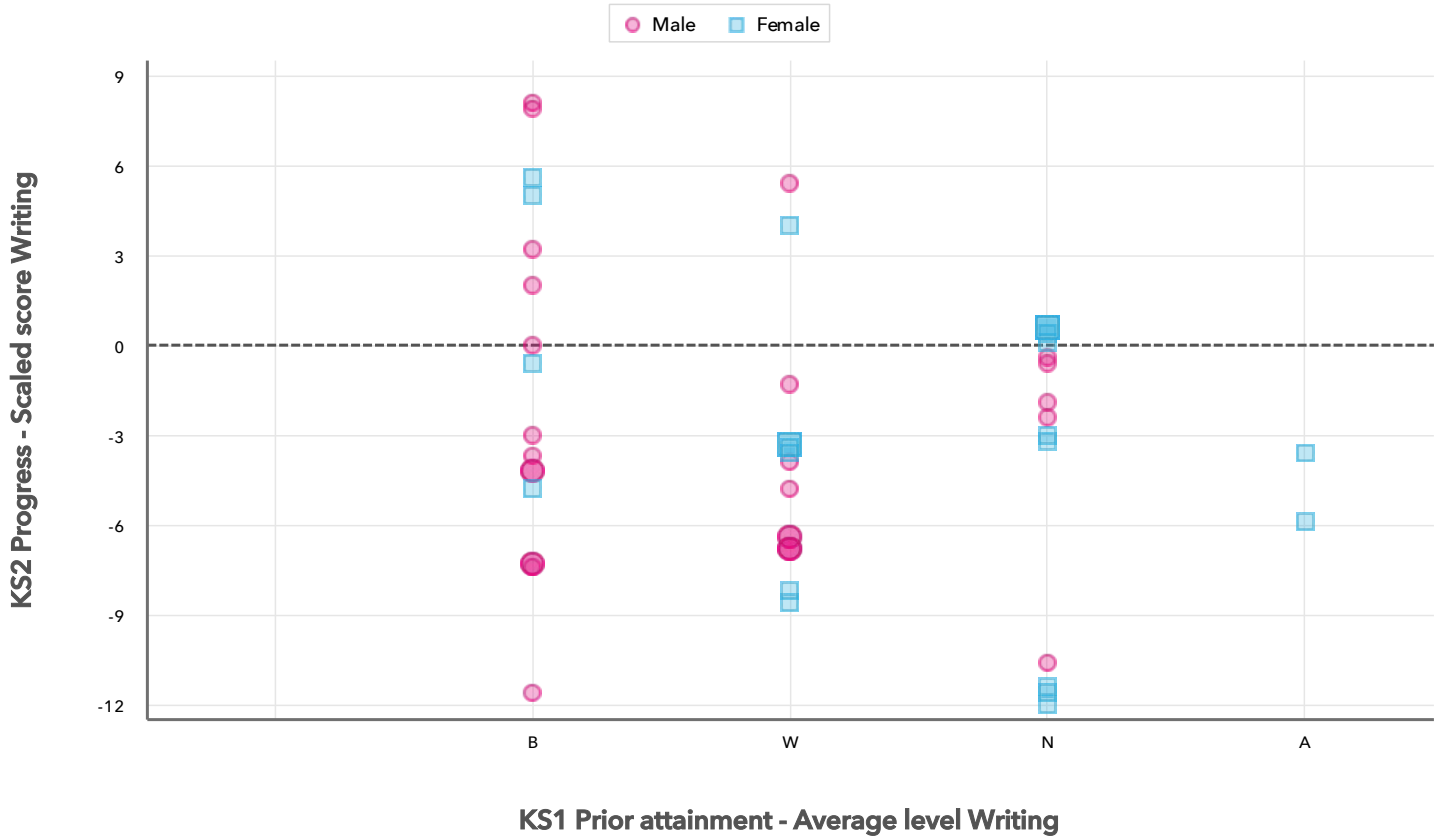
Pupils	Attainment			Progress					
	Scaled Score Writing (DFE)			Scaled Score Writing (DFE)					
	FSM6	Not FSM6	Gap	FSM6	Not FSM6	Gap			
<b>Summary</b>	All Pupils	28	22	90.7	95.8	-5.1	-3.8	-2	-1.8
<b>Gender</b>	Male	16	11	87.4	94	-6.6	-4	-1.5	-2.5
	Female	12	11	95	97.5	-2.5	-3.5	-2.5	-1
<b>DFE Prior Attainment</b>	Higher attainers	4	4	103	103	0	-2.6	-2.6	0
	Middle attainers	10	8	92.2	100	-7.8	-7.3	-1.4	-5.9
	Lower attainers	14	10	86.1	89.5	-3.4	-1.6	-2.3	0.7
<b>SEN Group</b>	SEN Support	10	5	88	92.8	-4.8	-4.2	-3.3	-0.9
	No SEN	18	17	92.2	96.6	-4.4	-3.6	-1.7	-1.9
<b>Ethnic Group</b>	White	24	22	90.6	95.8	-5.2	-3.1	-2	-1.1
	Not White	4	-	91	-	-	-7.7	-	-

### Census information

KS2's latest academic year uses the context data provided in the school's MIS

# Scatterplot

KS2 Pupil scatterplot 2023 50 pupils highlighted by Gender



**Census information**

KS2's latest academic year uses the context data provided in the school's MIS

# Your evaluation – Writing analysis

2023

Key Stage 2

Use this page to assess your performance, evaluate your interventions and summarise key actions for next year. Keep your evaluation clear and focused. Key actions should include timescales and owners.

## Strengths

## Areas for improvement

## Key actions to improve performance

## Grammar, punctuation & spelling analysis

### Reports included in this section

Attainment & progress

Pupil groups

Disadvantaged pupils

Scatterplot

**Confidential:** Contains personal information



#### Key indicators

Scaled Score Grammar, Punctuation & Spelling

% Expected standard+ Grammar, Punctuation & Spelling

% Higher standard Grammar, Punctuation & Spelling

VA

#### Value added

Achievement is compared with similar pupils nationally. The FFT VA model uses prior attainment, gender and month of birth as a starting point.

# Attainment & progress

## KS2 Attainment 2023

50 pupils

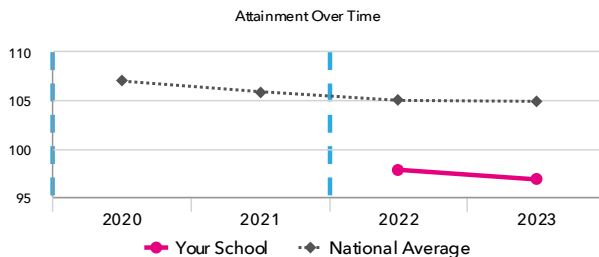
Scaled Score Grammar, Punctuation & Spelling DFE

96.8

FFT Rank

100 BETTER 1

Significantly below the national average (104.9)



## KS2 Progress 2023

50 matched pupils

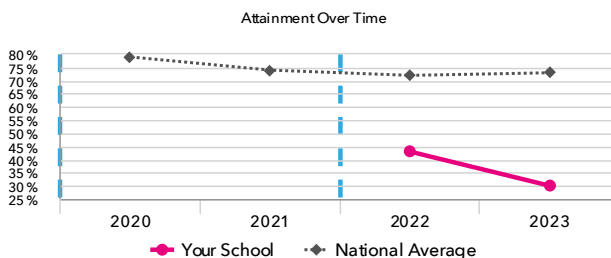
Scaled Score Grammar, Punctuation & Spelling

-3.8

FFT Rank

100 BETTER 1

Significantly below the national average (0)



% Expected standard+ Grammar, Punctuation & Spelling

-25%

FFT Rank

100 BETTER 1

Significantly below the national average (0%)

% Expected standard+ Grammar, Punctuation & Spelling DFE

30%

FFT Rank

100 BETTER 1

Significantly below the national average (73%)

## KS2 performance summary

	Actual results			Pupil progress		
	2021	2022	2023	2021	2022	2023
Number of Pupils / % Matched	-	56	50	-	98%	100%
% Expected standard+ (Re, Wr, Ma)	-	26%	22%	-	-17%	-21%
% Higher standard (Re, Wr, Ma)	-	0%	0%	-	-5%	-4%
Average Scaled Score (Re, GPS, Ma)	-	97.9	97.1	-	-1.9	-4.0
Average Scaled Score (Re, Ma)	-	98.1	97.1	-	-1.9	-4.2
% Expected standard+ Reading	-	50%	30%	-	-10%	-29%
% Higher standard Reading	-	7%	10%	-	-14%	-8%
Scaled Score Reading	-	98.4	96.7	-	-1.7	-4.5
% Expected standard+ Writing	-	34%	30%	-	-18%	-24%
% Higher standard Writing	-	0%	0%	-	-9%	-6%
Scaled Score Writing	-	91.9	92.9	-	-3.9	-3.0
% Expected standard+ Maths	-	50%	34%	-	-7%	-24%
% Higher standard Maths	-	5%	4%	-	-11%	-10%
Scaled Score Maths	-	97.8	97.1	-	-1.7	-3.9
% Expected standard+ Grammar, Punctuation & Spelling	-	43%	30%	-	-13%	-25%
% Higher standard Grammar, Punctuation & Spelling	-	11%	4%	-	-9%	-14%
Scaled Score Grammar, Punctuation & Spelling	-	97.8	96.8	-	-2.1	-3.8
% Expected standard+ Science	-	57%	52%	-	-	-

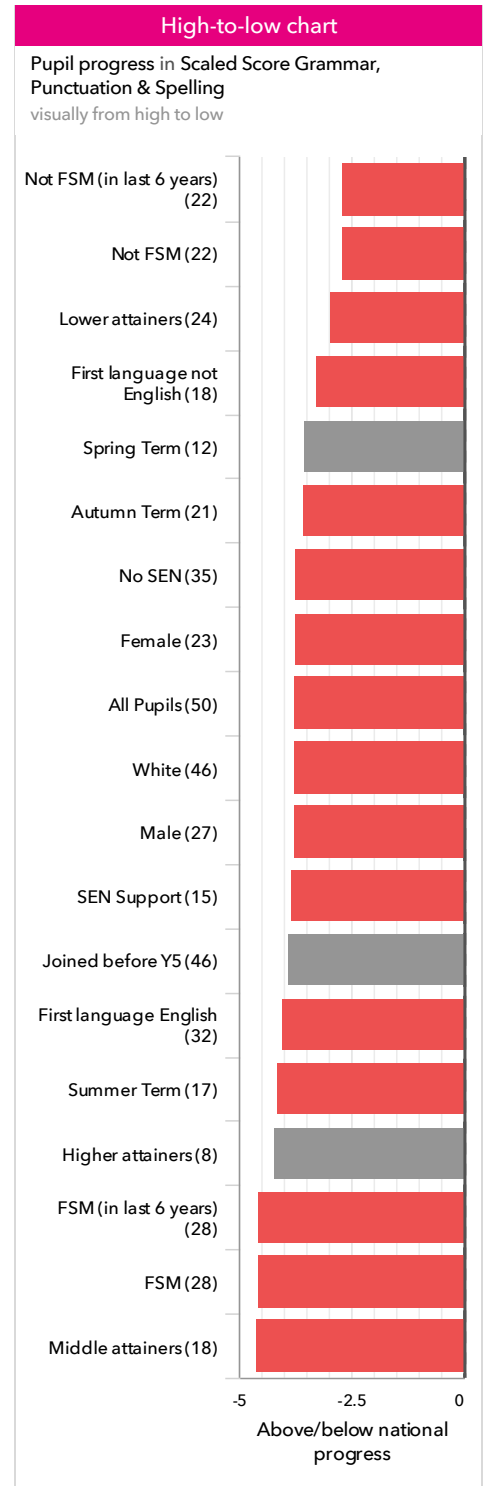
### Census information

KS2's latest academic year uses the context data provided in the school's MIS

# Pupil groups

## KS2 Pupil groups performance 2023

		Actual results			Pupil progress			
	Pupils	Scaled Score Grammar, Punctuation & Spelling <small>DFE</small>	% Expected standard+ Grammar, Punctuation & Spelling <small>DFE</small>	% Higher standard Grammar, Punctuation & Spelling <small>DFE</small>	Scaled Score Grammar, Punctuation & Spelling	% Expected standard+ Grammar, Punctuation & Spelling	% Higher standard Grammar, Punctuation & Spelling	
<b>Summary</b>	All Pupils	50	96.8	30%	4%	-3.8	-25%	-14%
<b>Gender</b>	Male	27	95.0	22%	4%	-3.8	-22%	-9%
	Female	23	98.7	39%	4%	-3.7	-27%	-19%
<b>DFE Prior Attainment</b>	Higher attainers	8	106.9	88%	25%	-4.2	-11%	-40%
	Middle attainers	18	99.1	44%	0%	-4.6	-33%	-18%
	Lower attainers	24	91.2	0%	0%	-3.0	-23%	-2%
<b>Pupil Premium</b>	FSM (in last 6 years)	28	95.0	21%	0%	-4.6	-28%	-15%
	Not FSM (in last 6 years)	22	98.8	41%	9%	-2.7	-21%	-12%
<b>FSM</b>	FSM	28	95.0	21%	0%	-4.6	-28%	-15%
	Not FSM	22	98.8	41%	9%	-2.7	-21%	-12%
<b>Term of Birth</b>	Autumn Term	21	98.9	52%	5%	-3.6	-16%	-20%
	Spring Term	12	95.1	17%	0%	-3.5	-32%	-14%
	Summer Term	17	95.1	12%	6%	-4.1	-31%	-6%
<b>SEN Group</b>	SEN Support	15	94.8	33%	7%	-3.8	-11%	-6%
	No SEN	35	97.6	29%	3%	-3.7	-31%	-17%
<b>EAL</b>	First language not English	18	95.6	22%	6%	-3.3	-30%	-10%
	First language English	32	97.5	34%	3%	-4.0	-22%	-16%
<b>Mobility</b>	Joined in Y5 or Y6	4	90.0	0%	0%	-2.2	-21%	-2%
	Joined before Y5	46	97.4	33%	4%	-3.9	-25%	-15%
<b>Ethnicity</b>	White	46	96.6	28%	4%	-3.8	-25%	-14%
	Black Caribbean	2	99.0	50%	0%	-2.2	-14%	-8%
	Black African	1	104.0	100%	0%	-1.1	+15%	-23%
	Unknown	1	92.0	0%	0%	-9.1	-66%	-8%

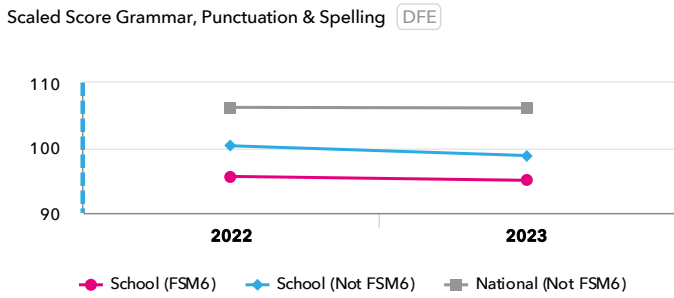


### Census information

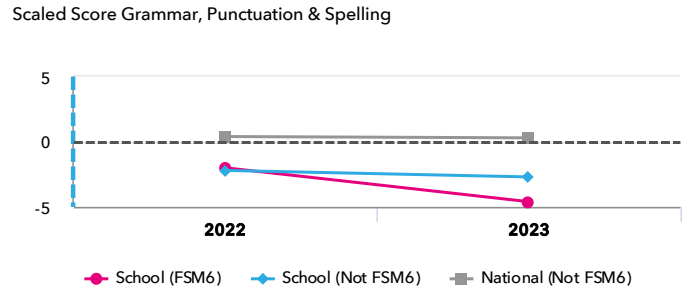
KS2's latest academic year uses the context data provided in the school's MIS

# Disadvantaged pupils

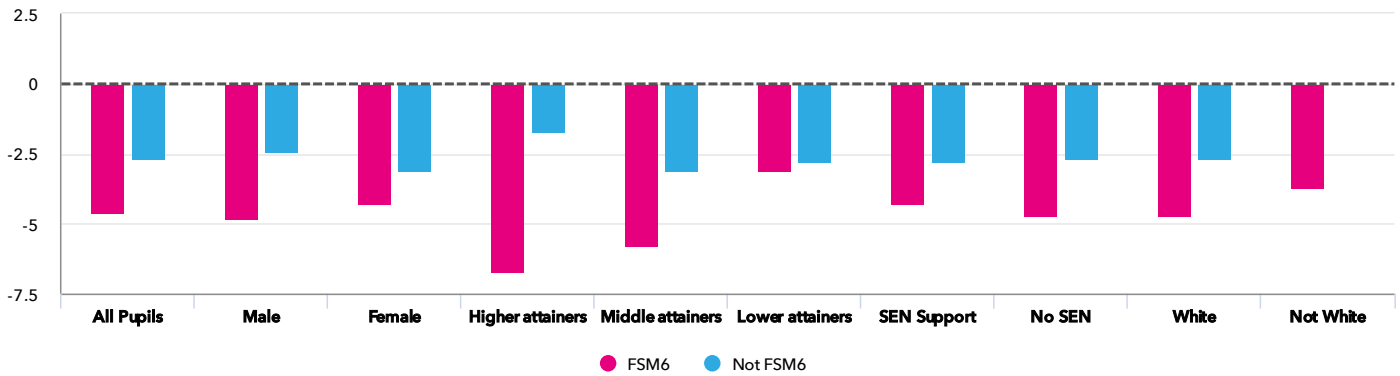
## KS2 attainment for disadvantaged pupils 2023



## KS2 progress for disadvantaged pupils 2023



## Progress gap Scaled Score Grammar, Punctuation & Spelling



## Attainment & progress

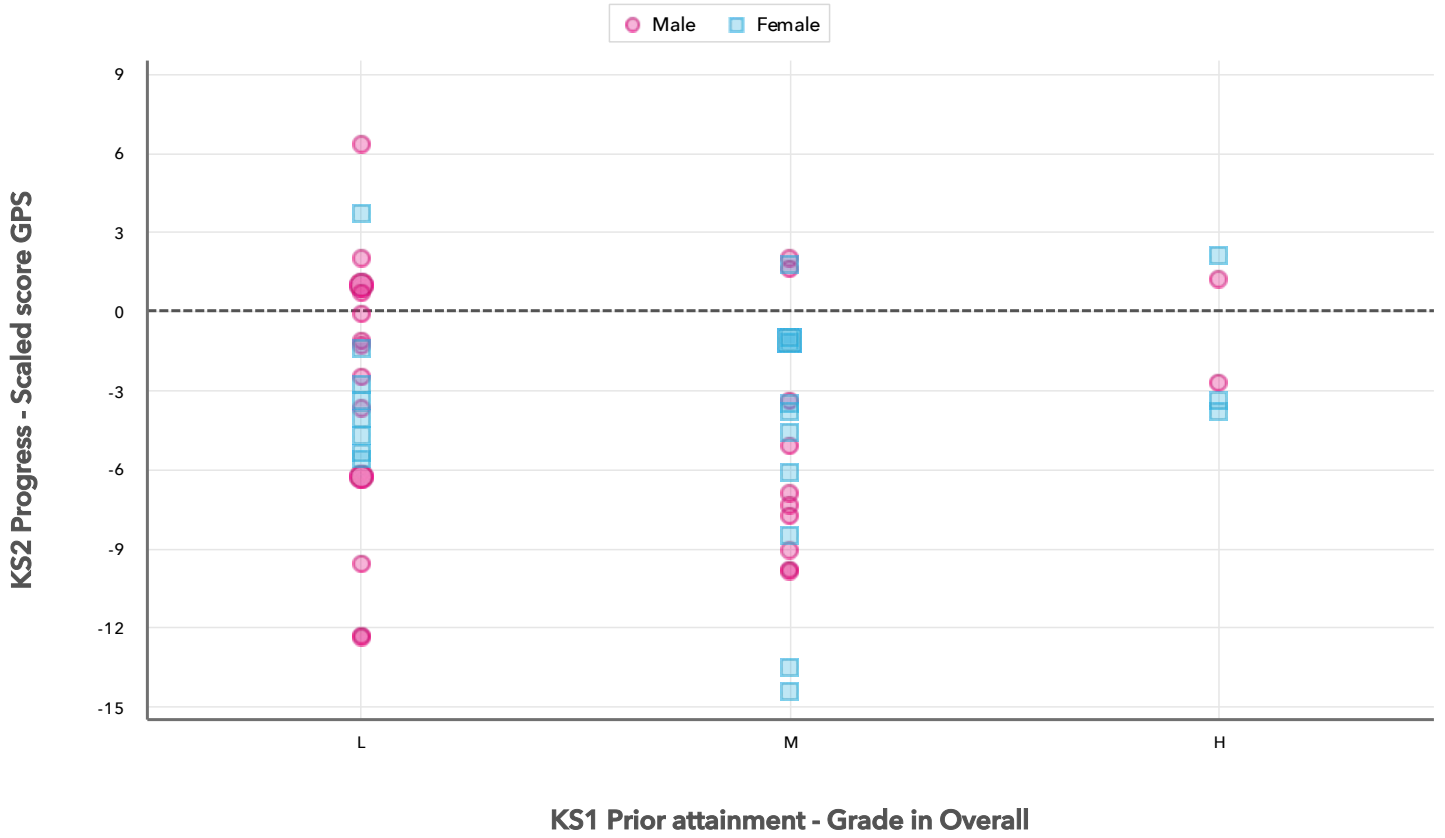
Pupils	Attainment			Progress					
	Scaled Score Grammar, Punctuation & Spelling <span>DFE</span>			Scaled Score Grammar, Punctuation & Spelling					
	FSM6	Not FSM6	Gap	FSM6	Not FSM6	Gap			
<b>Summary</b>	All Pupils	28	22	95 <span>⬇️</span>	98.8 <span>⬇️</span>	-3.8	-4.6 <span>⬇️</span>	-2.7 <span>⬇️</span>	-1.9
<b>Gender</b>	Male	16	11	93	97.5	-4.5	-4.8	-2.4	-2.4
	Female	12	11	97.3	100.2	-2.9	-4.3	-3.1	-1.2
<b>DFE Prior Attainment</b>	Higher attainers	4	4	104.3	109.5	-5.2	-6.7	-1.7	-5
	Middle attainers	10	8	97.1	101.5	-4.4	-5.8	-3.1	-2.7
	Lower attainers	14	10	90.2	92.4	-2.2	-3.1	-2.8	-0.3
<b>SEN Group</b>	SEN Support	10	5	93.4	97.2	-3.8	-4.3	-2.8	-1.5
	No SEN	18	17	95.8	99.3	-3.5	-4.7	-2.7	-2
<b>Ethnic Group</b>	White	24	22	94.4	98.8	-4.4	-4.7	-2.7	-2
	Not White	4	-	98.5	-	-	-3.7	-	-

### Census information

KS2's latest academic year uses the context data provided in the school's MIS

# Scatterplot

KS2 Pupil scatterplot 2023 50 pupils highlighted by Gender



**Census information**

KS2's latest academic year uses the context data provided in the school's MIS

# Your evaluation – Grammar, punctuation & spelling analysis

2023

Key Stage 2

Use this page to assess your performance, evaluate your interventions and summarise key actions for next year. Keep your evaluation clear and focused. Key actions should include timescales and owners.

## Strengths

## Areas for improvement

## Key actions to improve performance